The background of the slide is a composite image. On the left, there is a close-up photograph of a muscle dissection, showing various layers of tissue in shades of yellow, red, and white. On the right, there is a photograph of several black chess pieces, including a king, queen, and pawns, standing on a wooden chessboard. The overall composition suggests a strategic or systematic approach to the study of anatomy.

SYSTEME MUSCULAIRE

Dr. A. ABDALLAH

Laboratoire d'Anatomie Médico-Chirurgicale

Faculté de Médecine – Annaba

Email: abourahaf_dz@yahoo.fr

Systeme musculaire..



*fort,
précis,
intelligent.*



Plan du cours

- } Introduction.
- } Classification.
- } Situation.
- } Description.
- } Forme.
- } Texture.

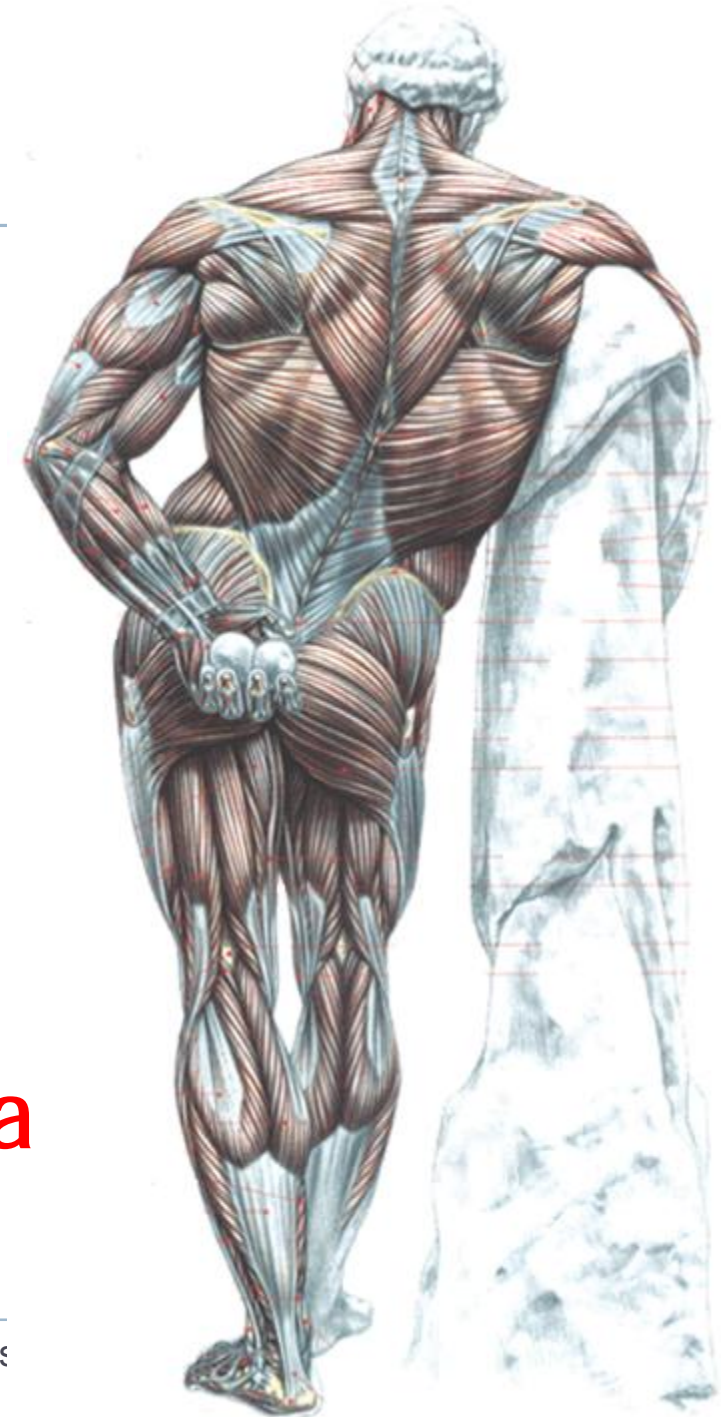


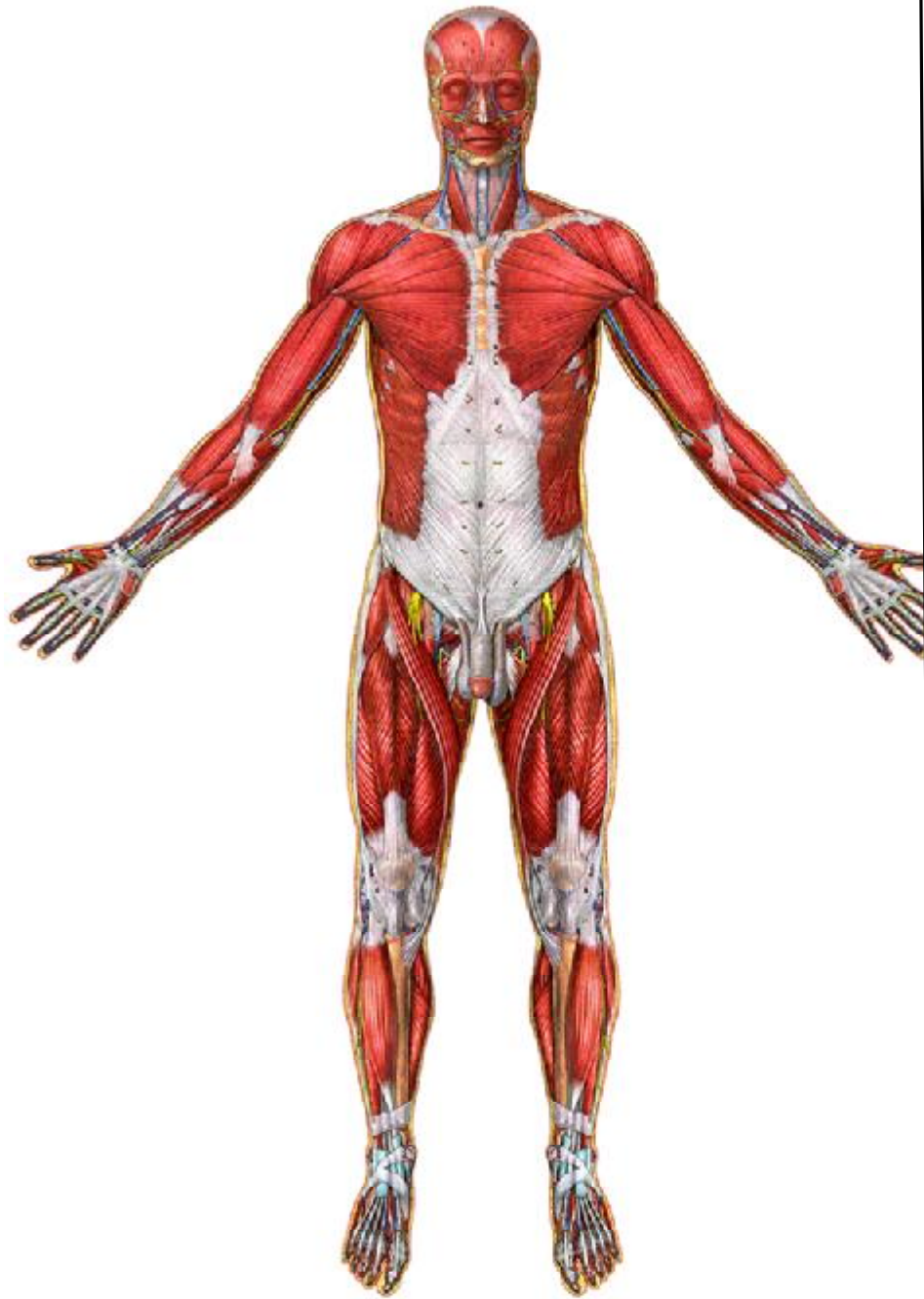
INTRODUCTION



Définition

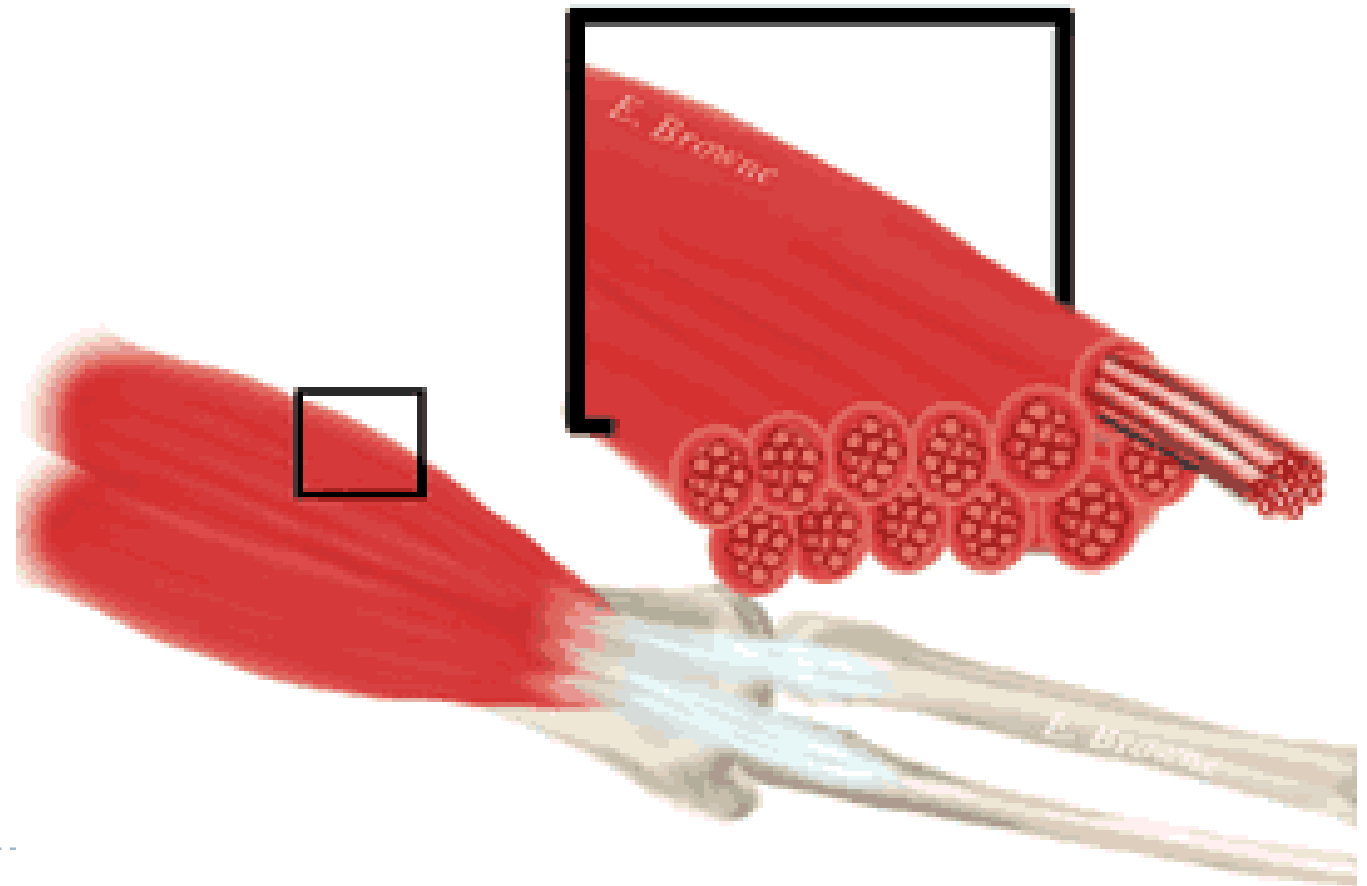
- } **Les muscles** sont des organes qui se contractent sous l'influence d'un stimulus.
- } Ce sont **les éléments moteurs** du système squelettique.
- } L'étude des muscles est **la myologie**.

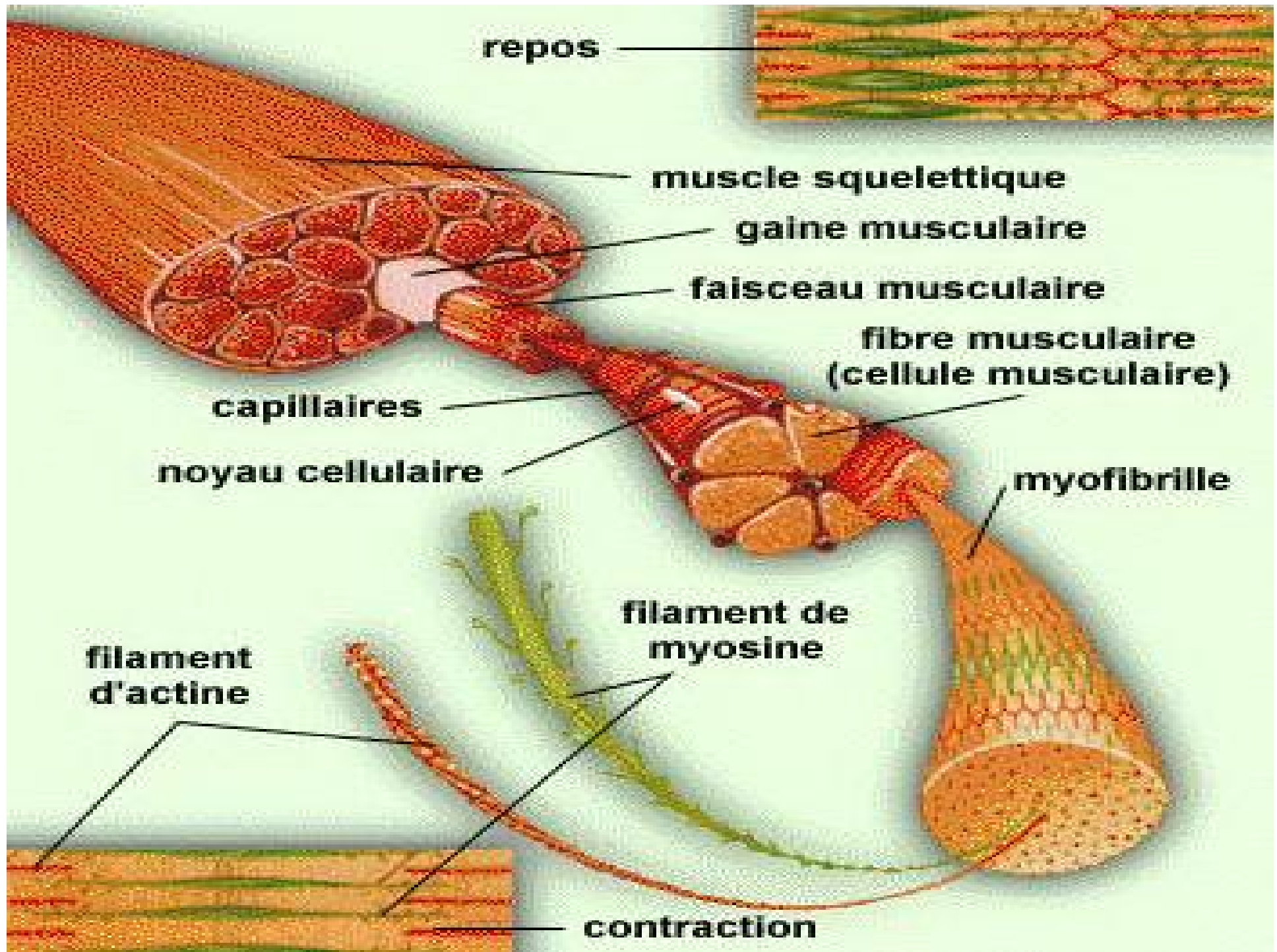


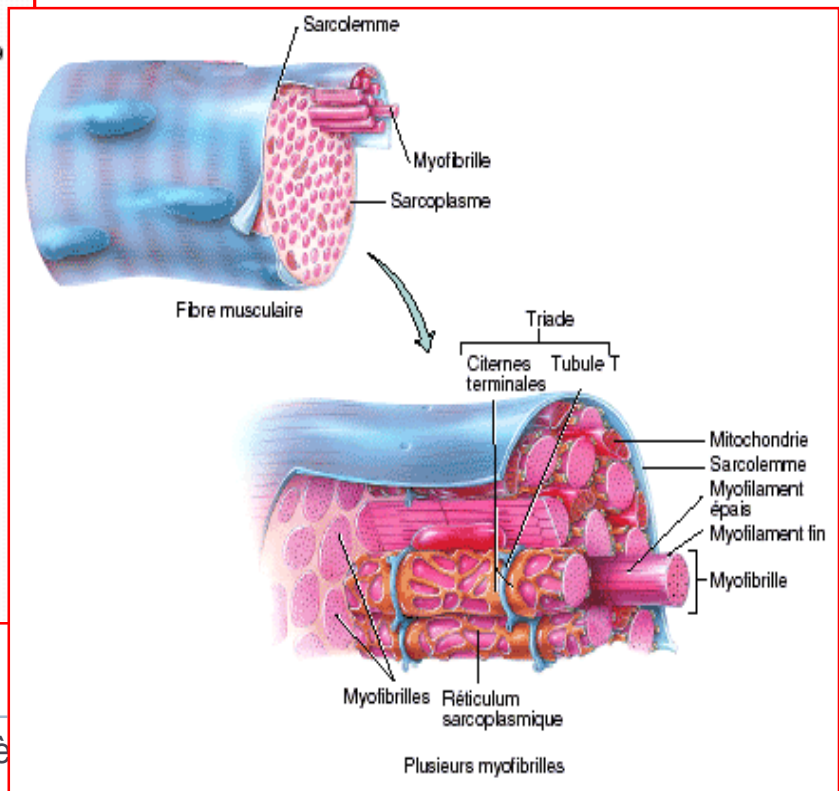
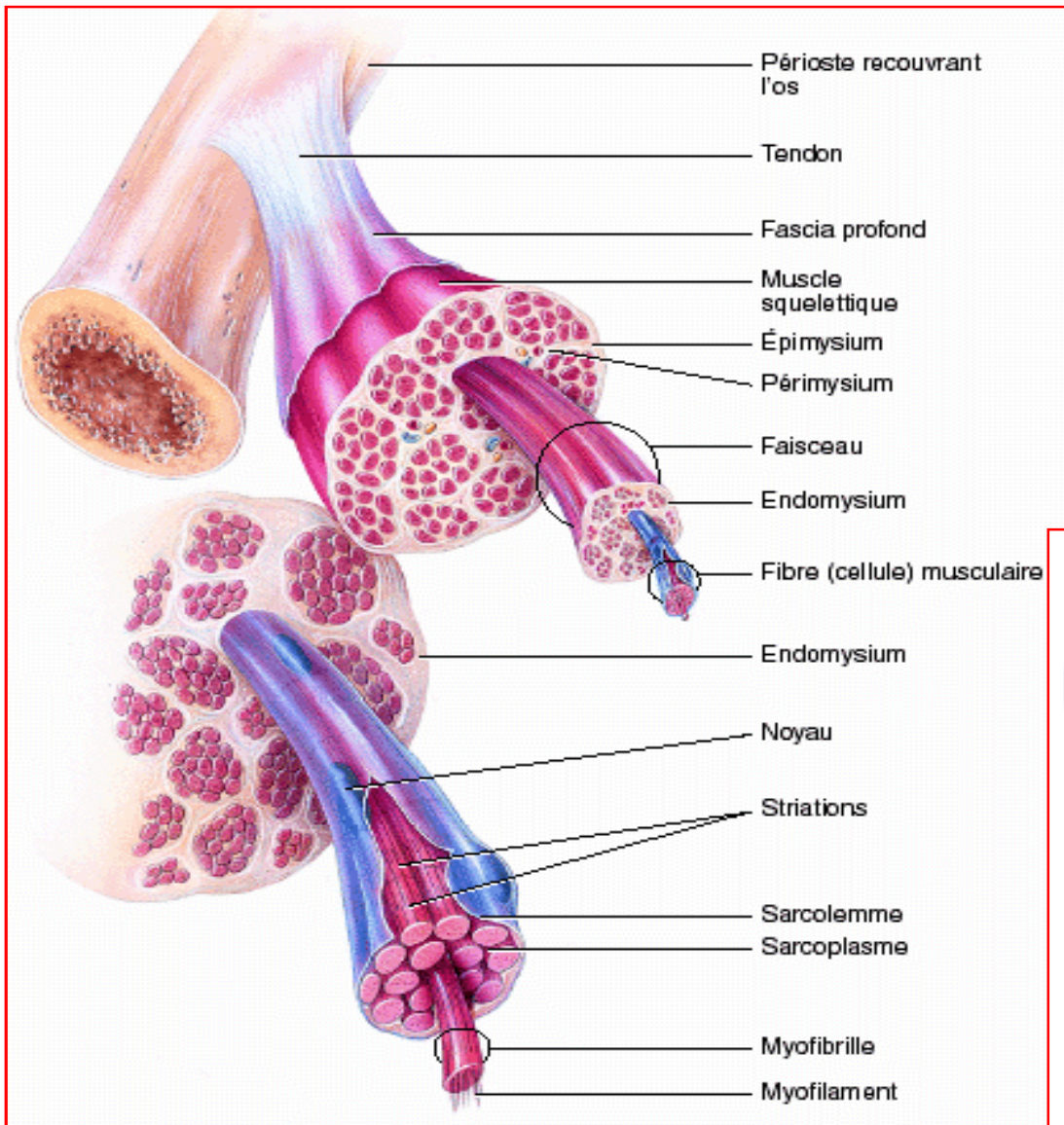


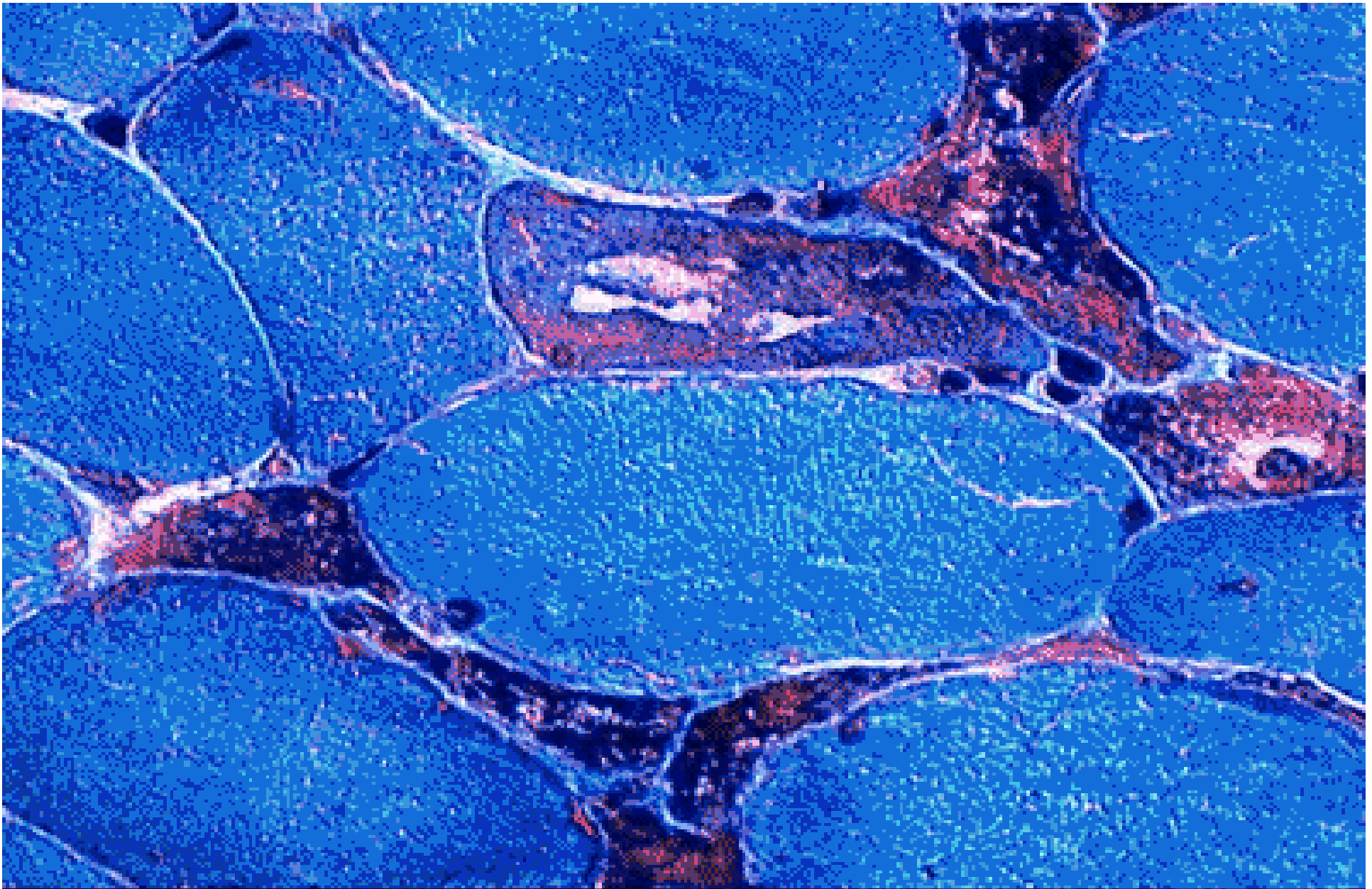
Fibre musculaire

} C'est l'unité élémentaire du muscle.

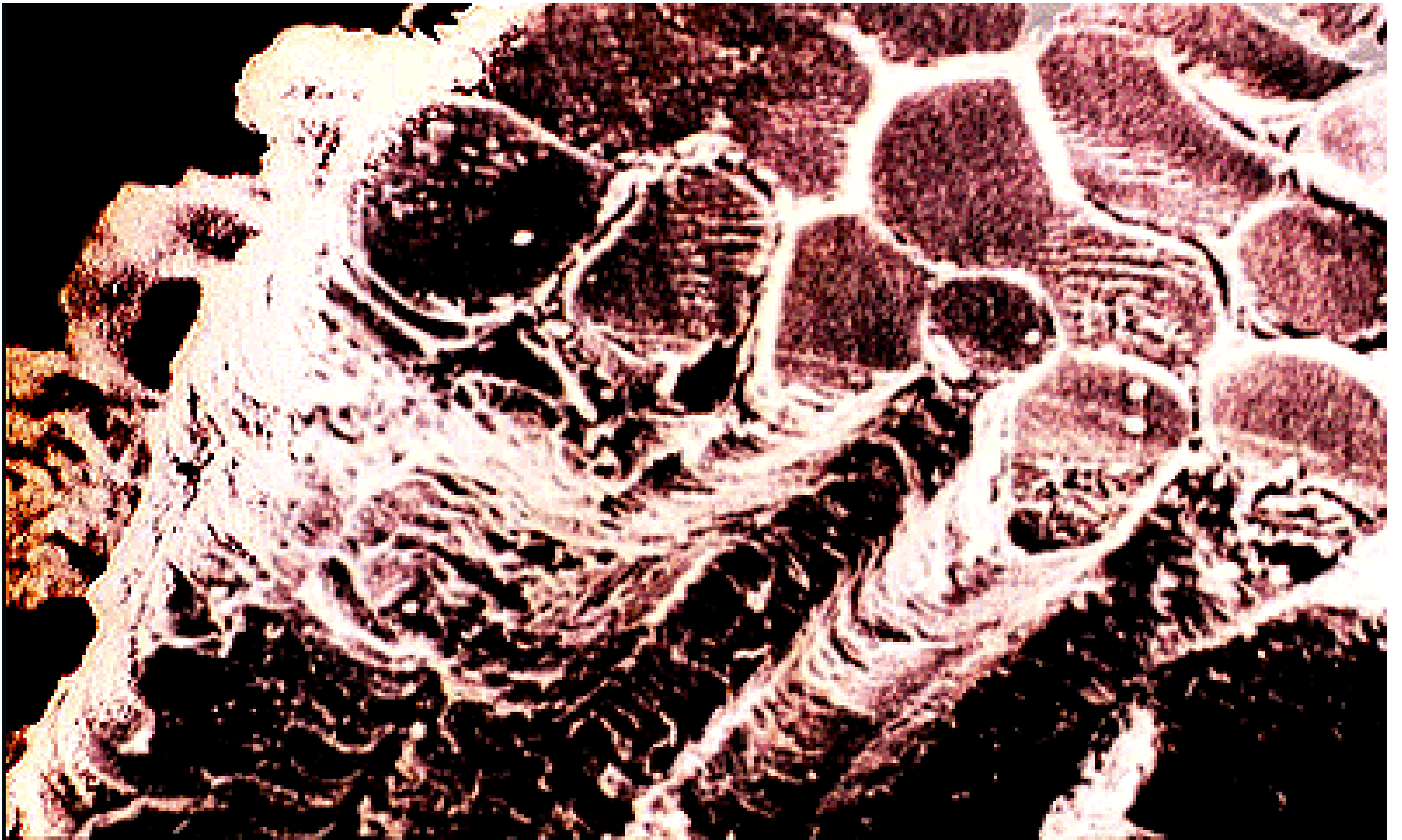




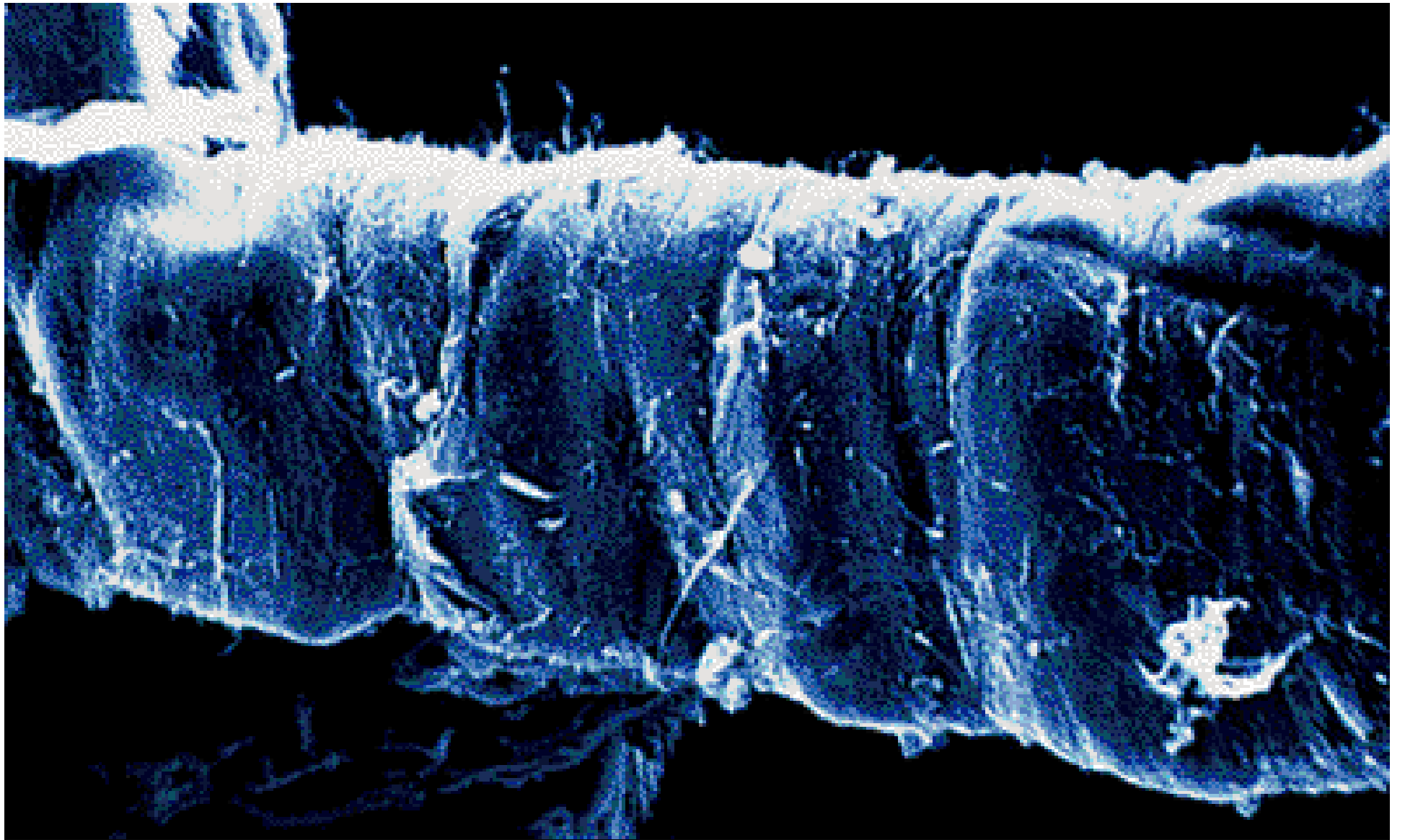




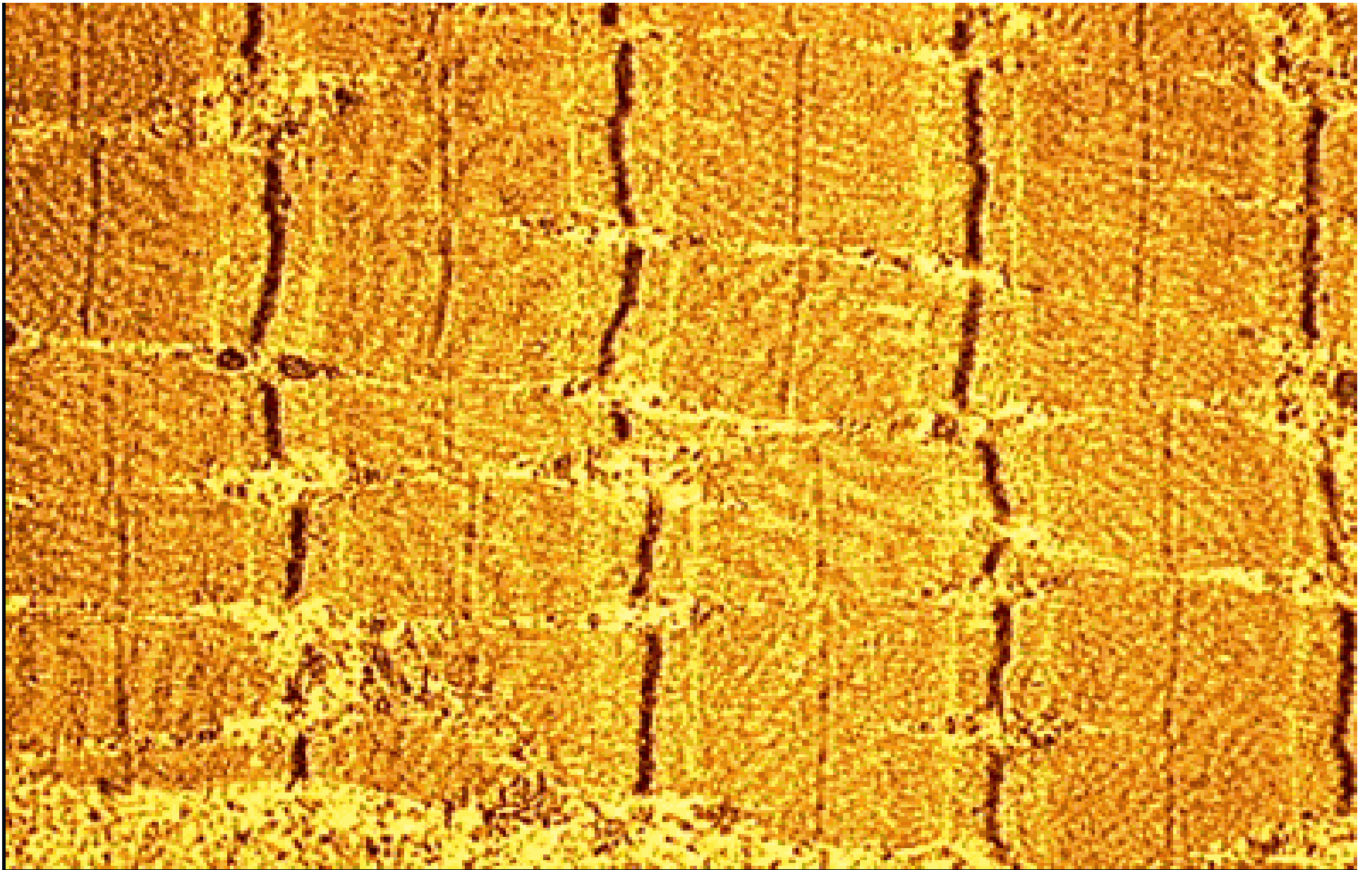
Muscle : vue en coupe ■



Fibre musculaire ■



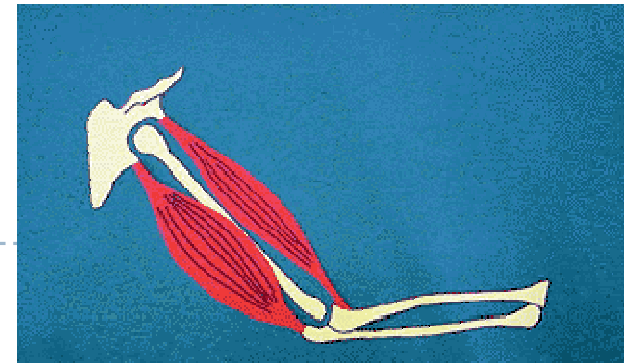
Fibre musculaire ■



Myofibrilles ■

Rôles

- } Maintien de la posture.
- } Stabilisation des articulations.
- } Production du mouvement.
- } Production de la chaleur (thermogenèse).
- } Fonctions viscérales (cœur, vaisseaux, tube digestif, voies urinaires...).



CARACTERISTIQUES



Propriétés

- } **Excitabilité et Contractilité:** capacité de se contracter (se raccourcir) suite à une excitation (nerveuse, électrique).
- } **Élasticité:** capacité de s'étirer.
- } **Tonicité:** capacité de conserver un certain état de contraction (tonus musculaire).



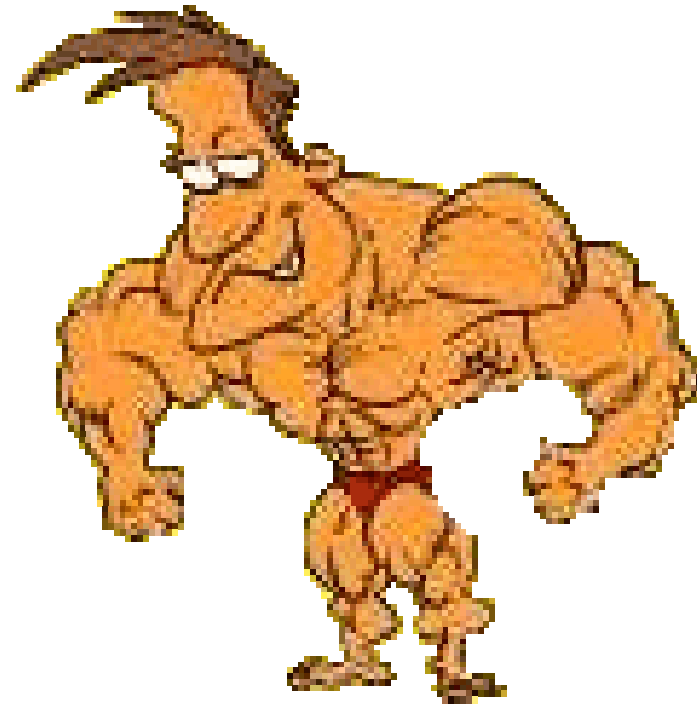
Nombre

- } 600 muscles squelettiques.
- } Les muscles lisses sont plus nombreux.



Poids

} 40% du poids du corps.

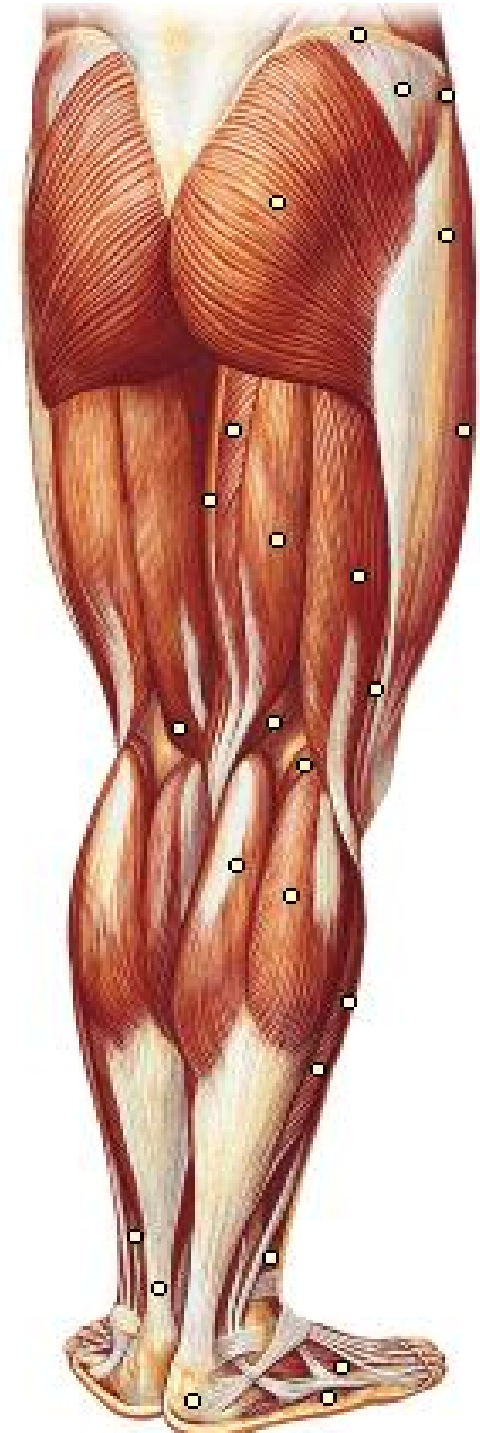
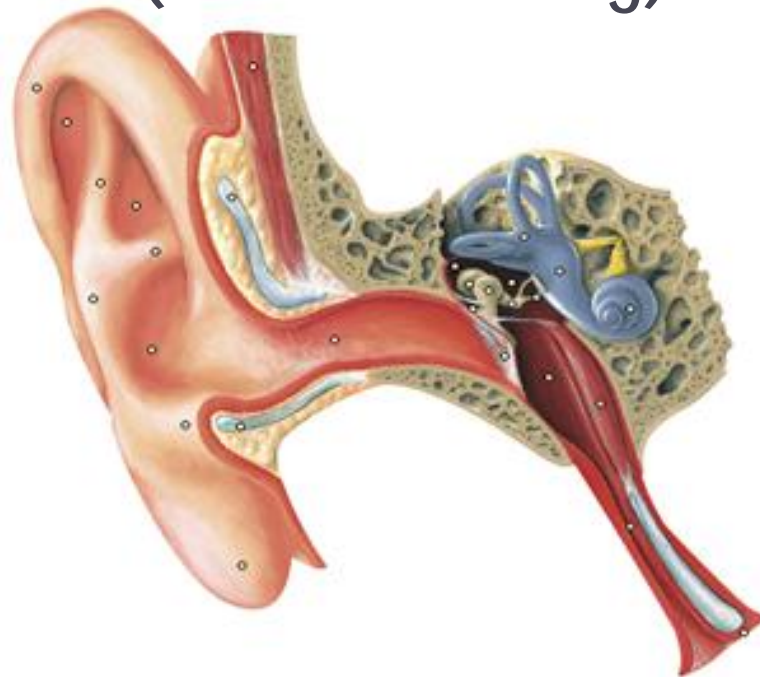


Volume

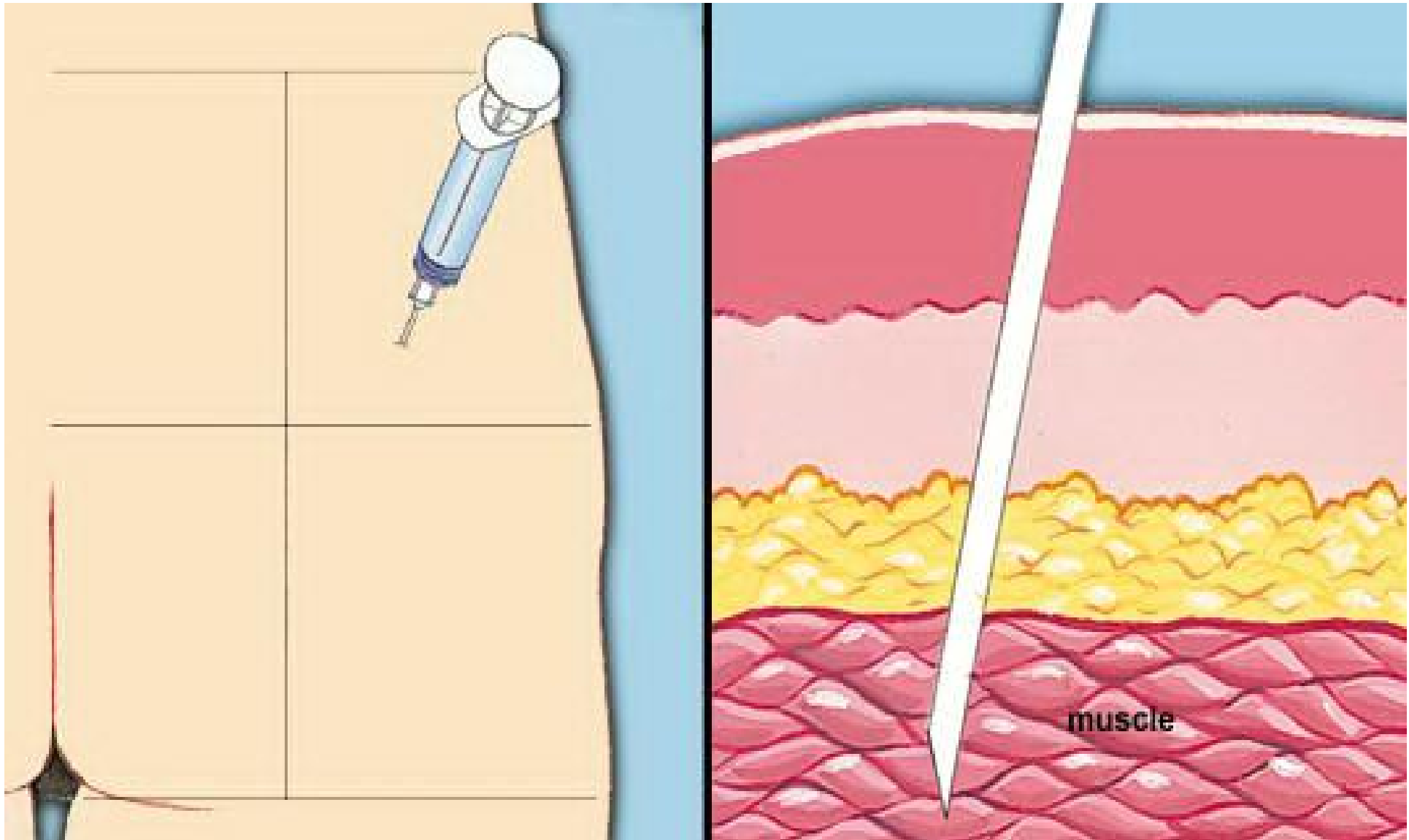
} Variable:

} Le plus volumineux: **muscle fessier**.

} Le plus petit: **muscle stapédien** (1mm de long).



Injection intramusculaire



CLASSIFICATION



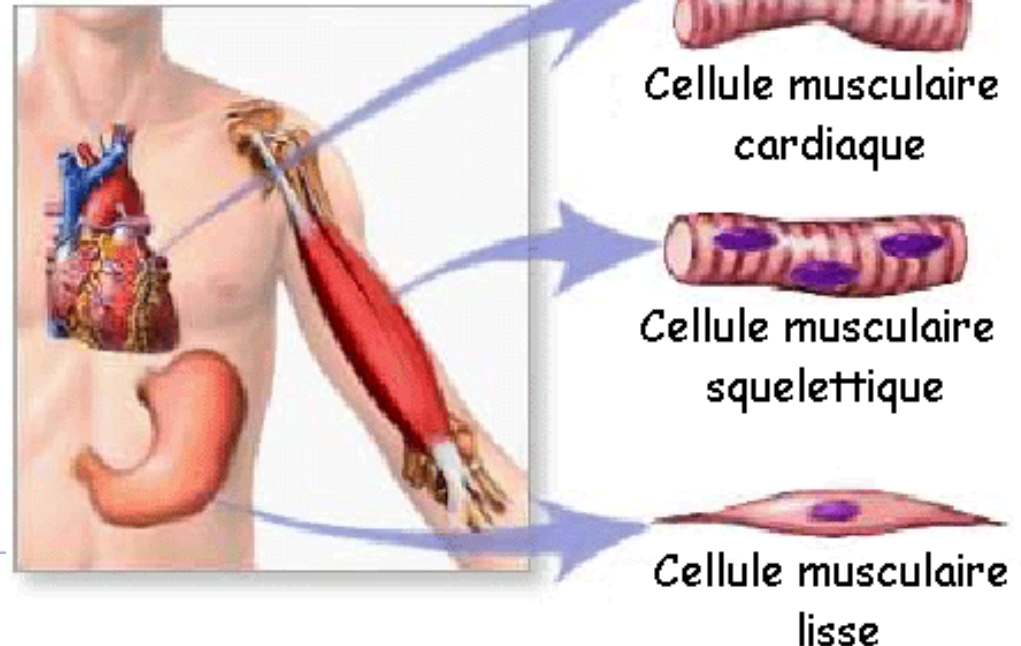
Classification

} 3 types musculaires :

} **Muscles striés (squelettiques).**

} Muscles lisses (viscéraux).

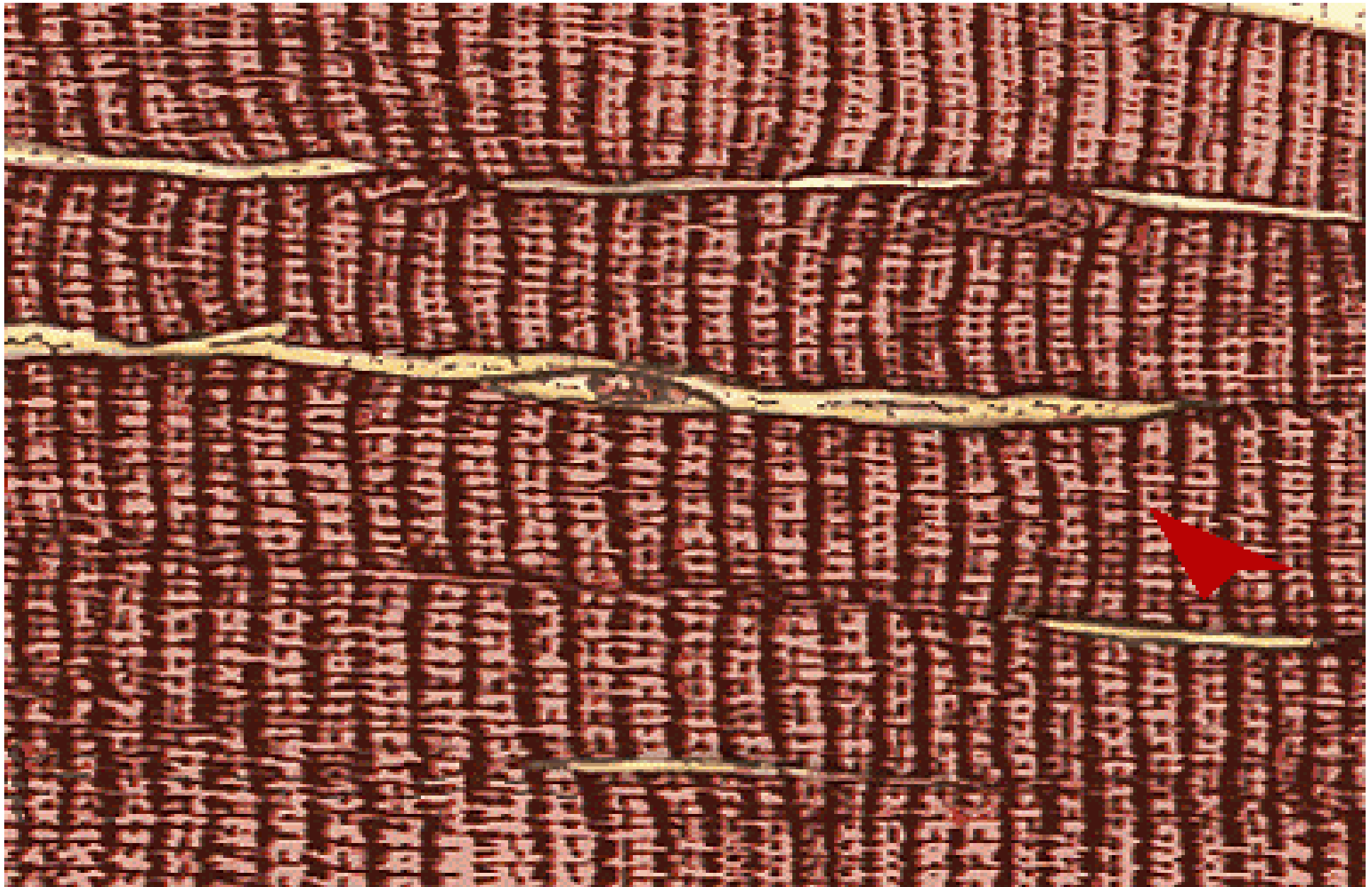
} **Muscles mixtes.**



Muscles striés

- } Rouges.
- } Volontaires.
- } Contrôlables par le SNC.

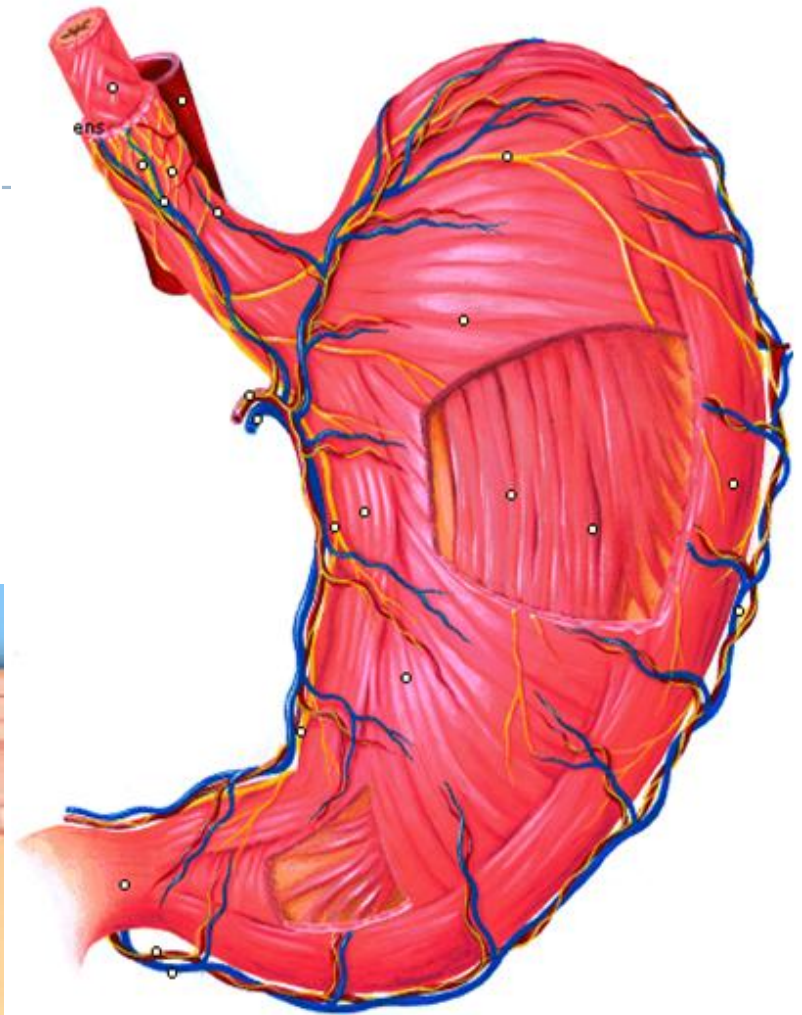
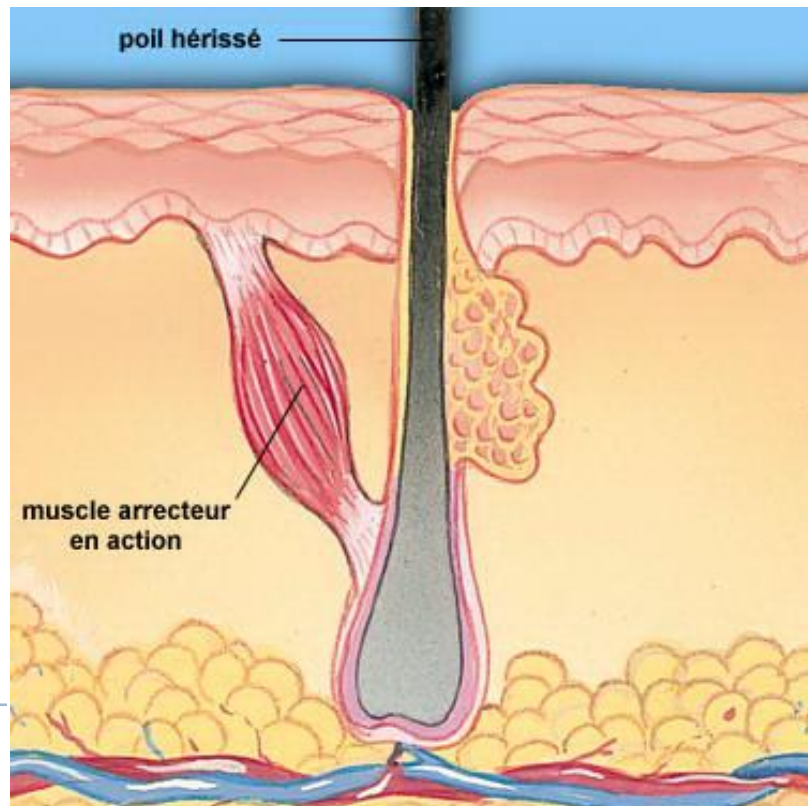


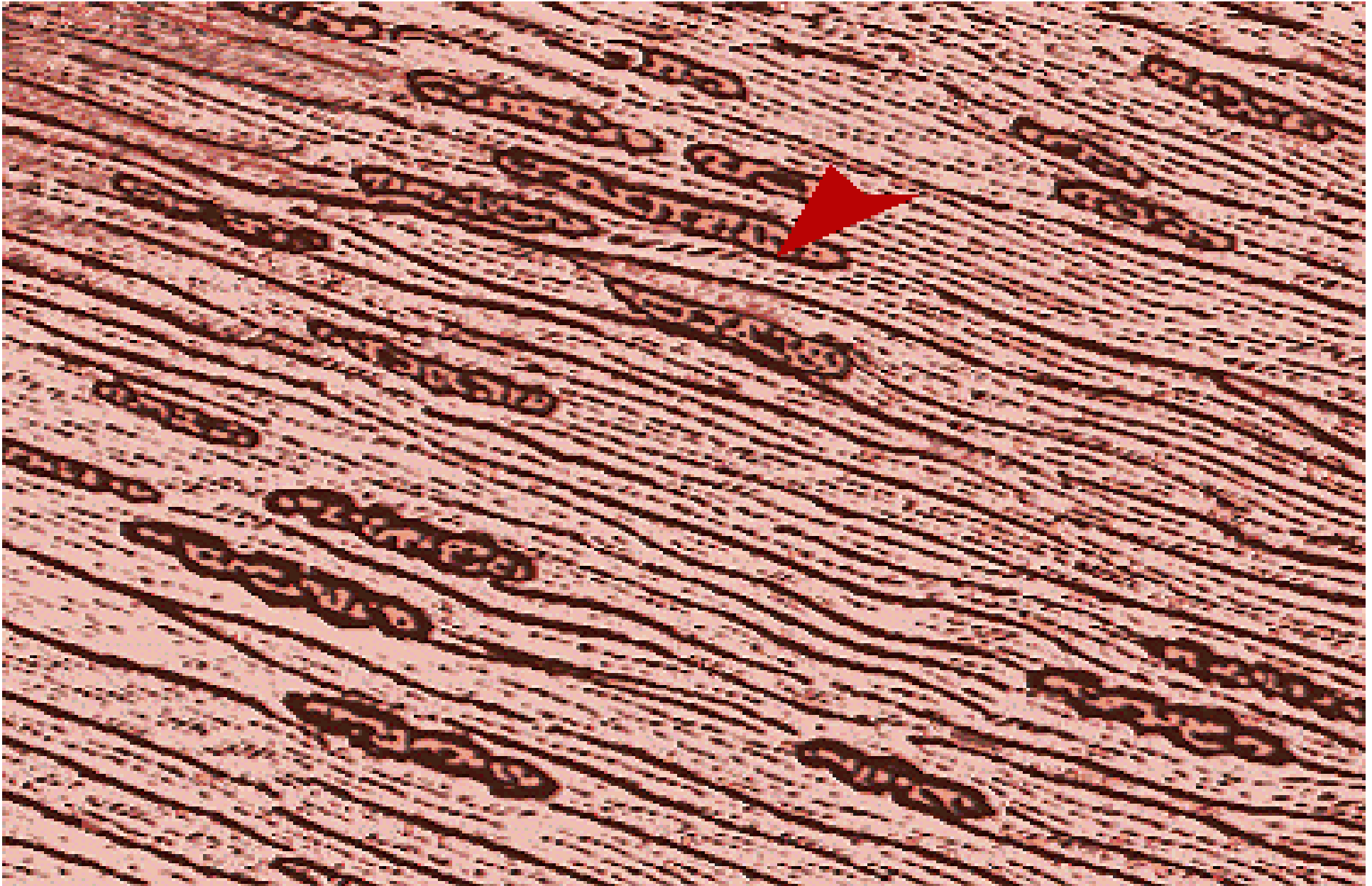


Muscle strié ■

Muscles lisses

- } Végétatifs.
- } Involontaires

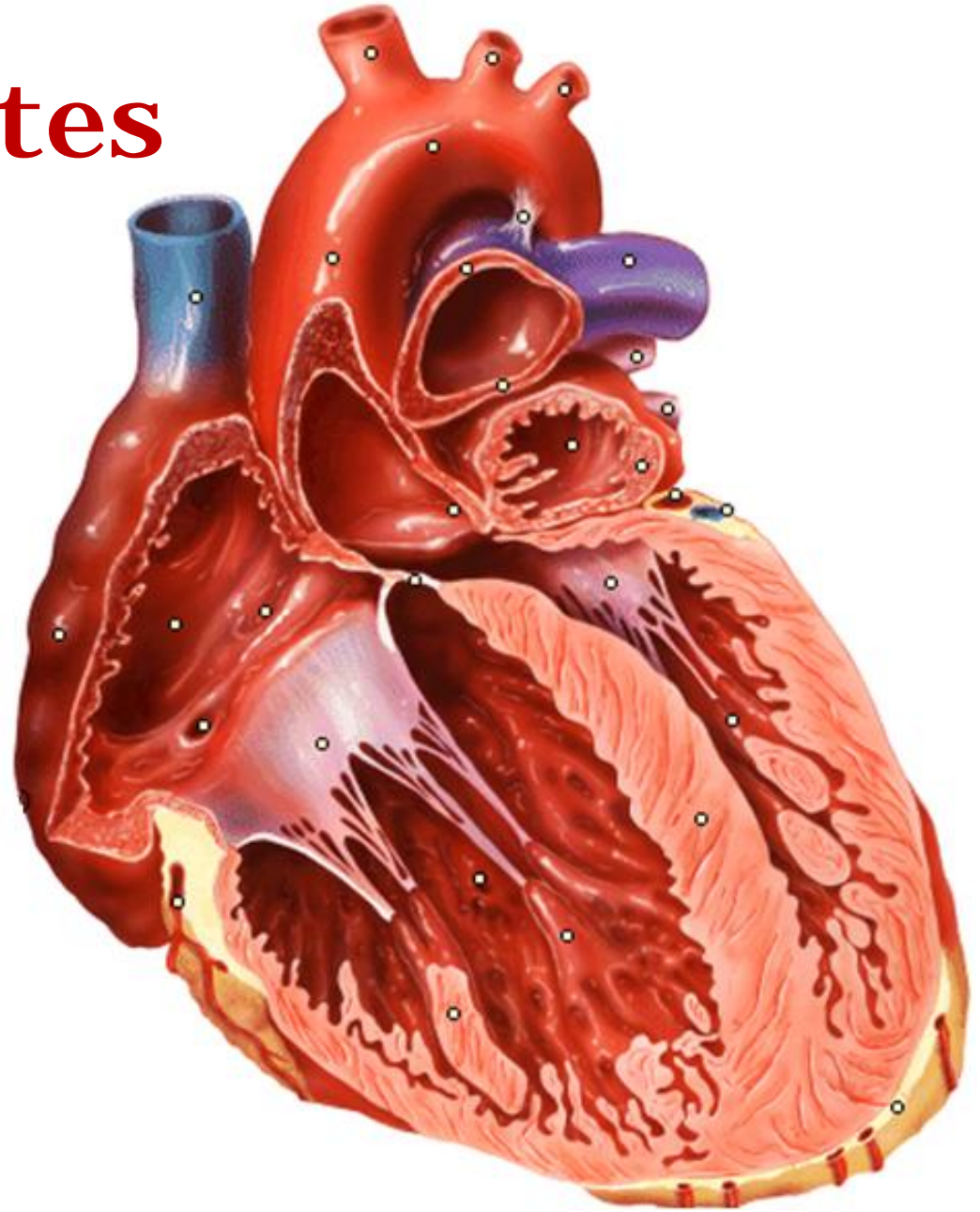


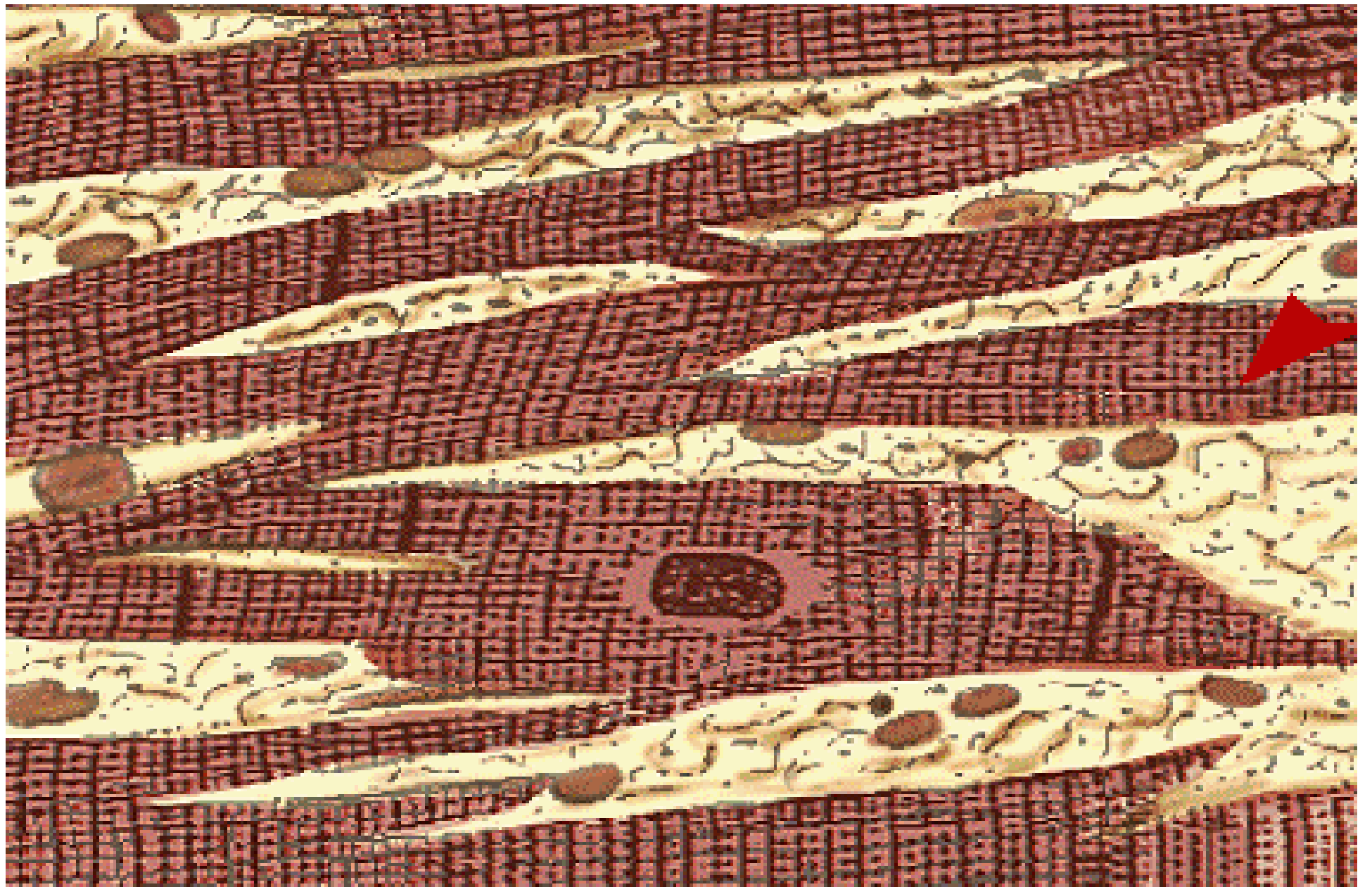


Muscle lisse ■

Muscles mixtes

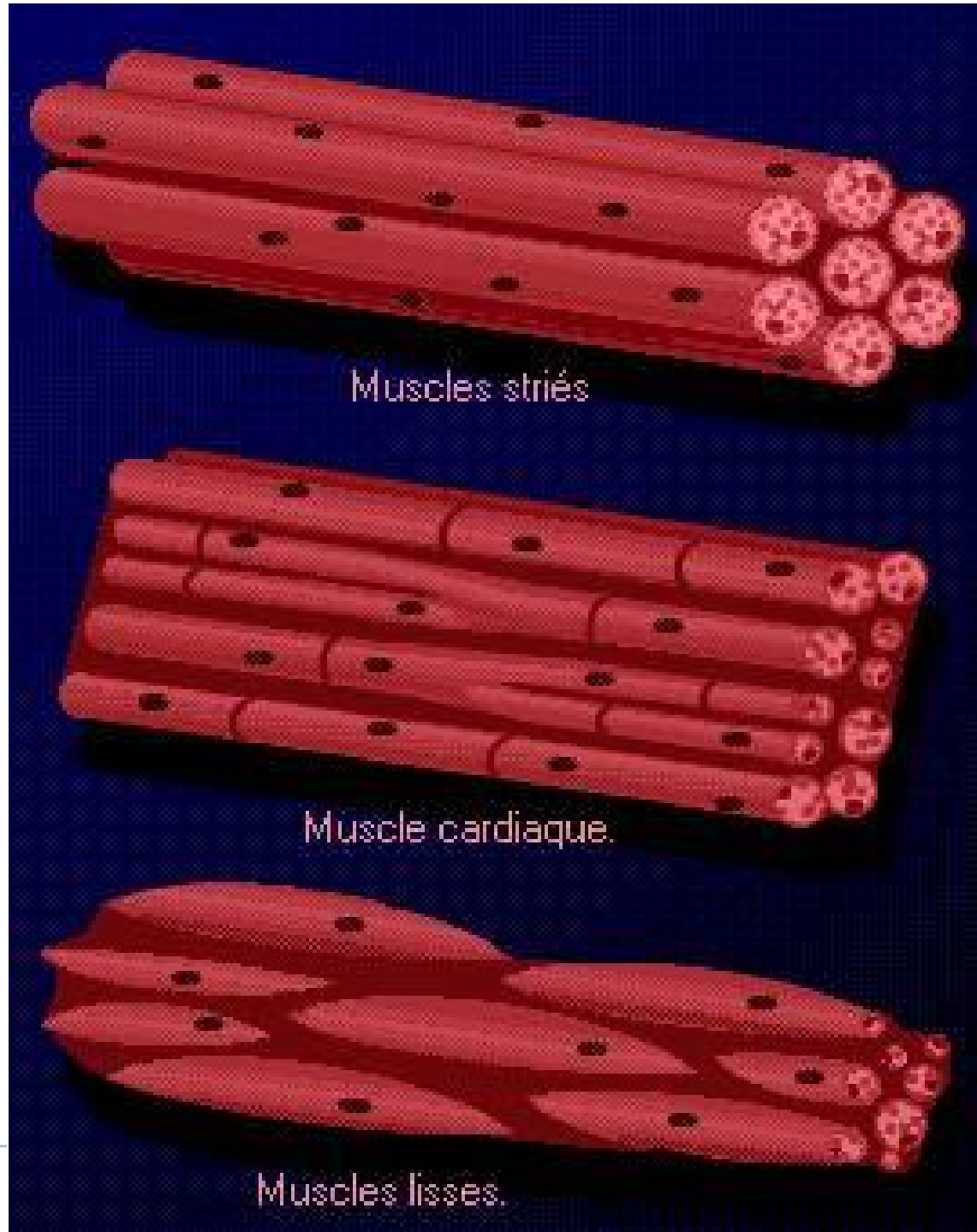
- } Striés.
- } Involontaires.
- } À contraction automatique.



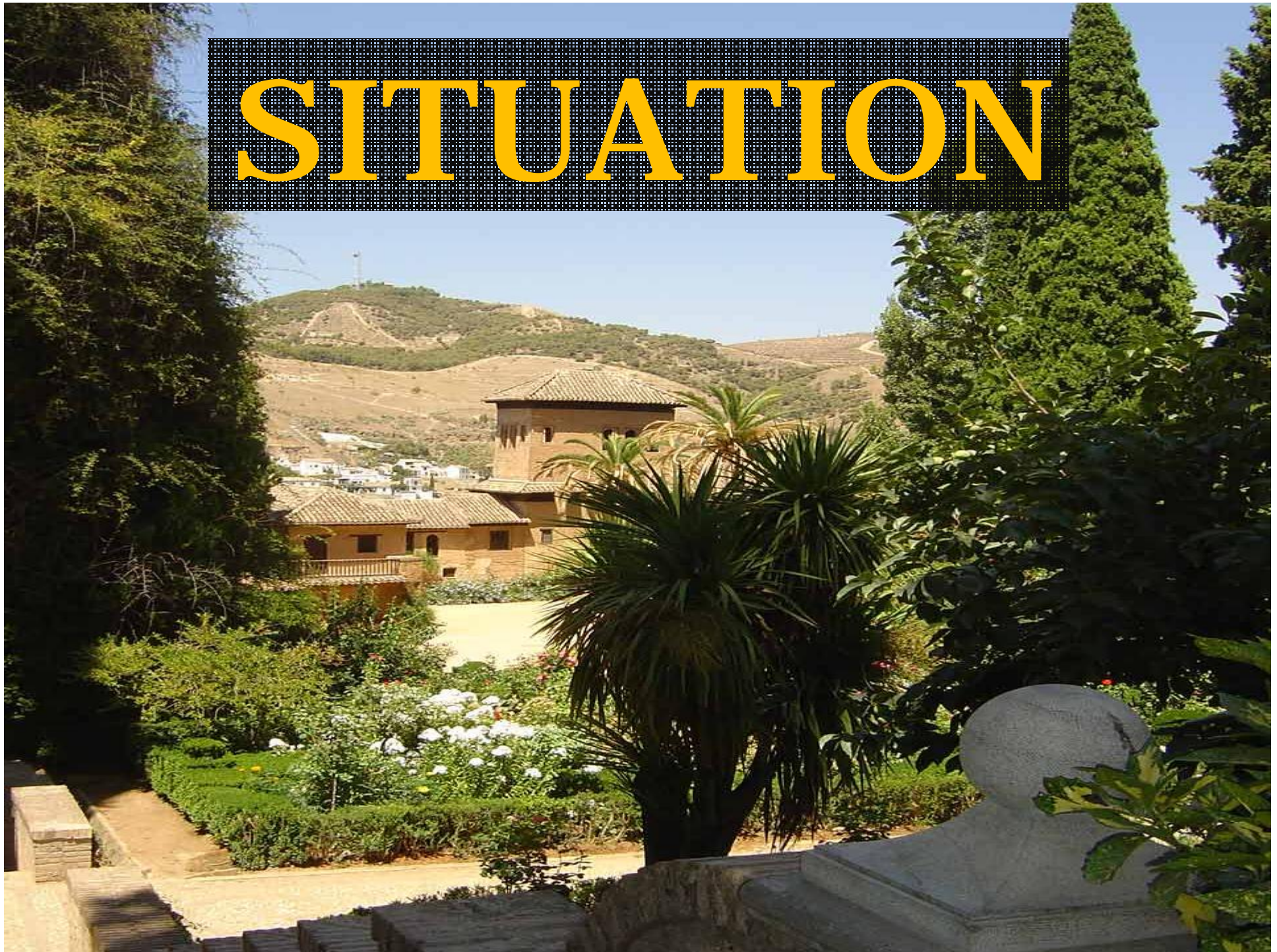


Muscle cardiaque ■

Squelettique	Cardiaque	Lisse
attaché aux os et à la peau	forme les parois du cœur	forme les parois des viscères
cellules striées	cellules striées	cellules non striées
contraction volontaire	contraction involontaire	contraction involontaire
contraction rapide	contraction rapide et rythmique	contraction lente et continue
se fatigue facilement	ne se fatigue plus	ne se fatigue plus
régulation : SNC	régulation : SNV	régulation : SNV



SITUATION

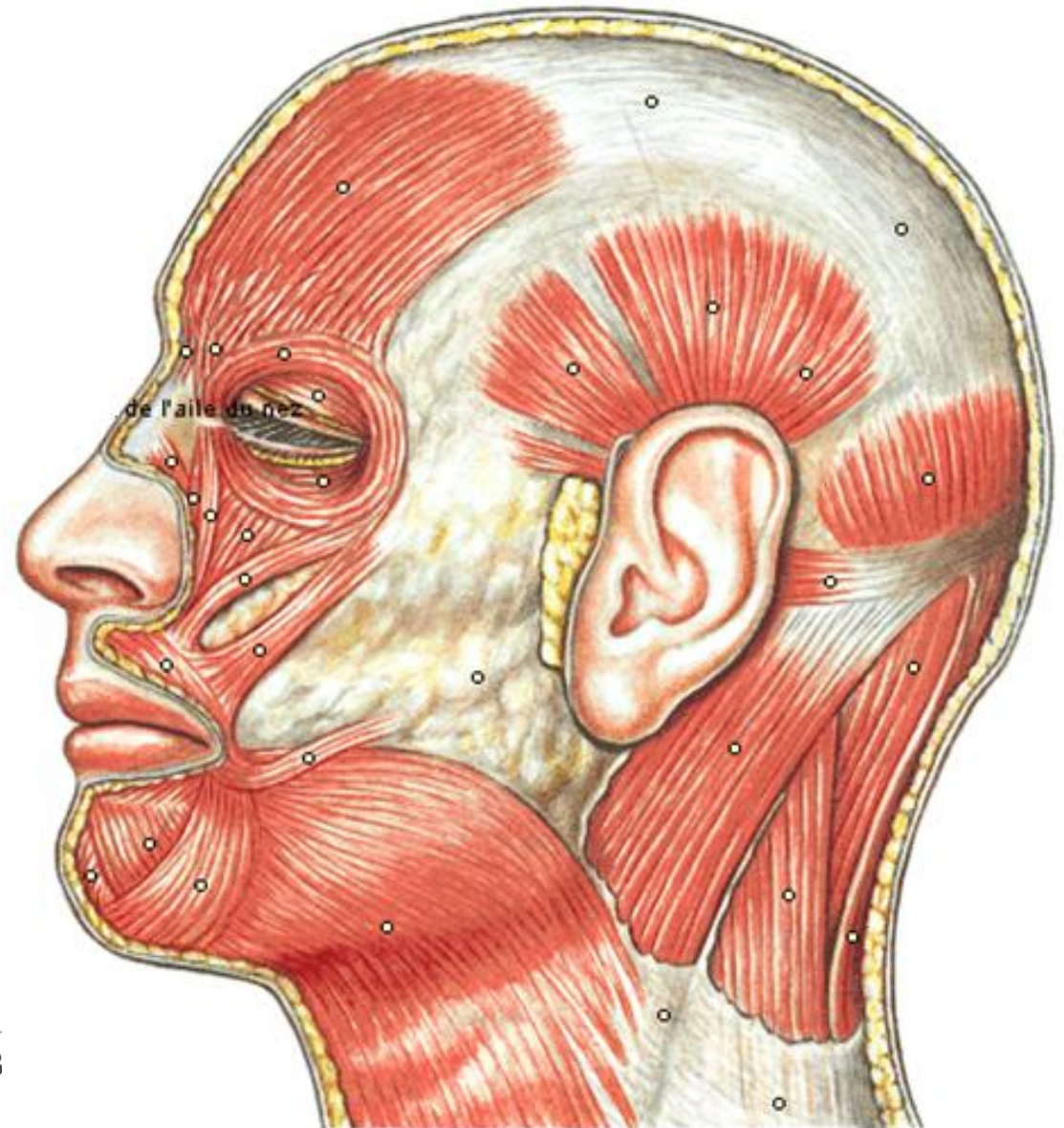


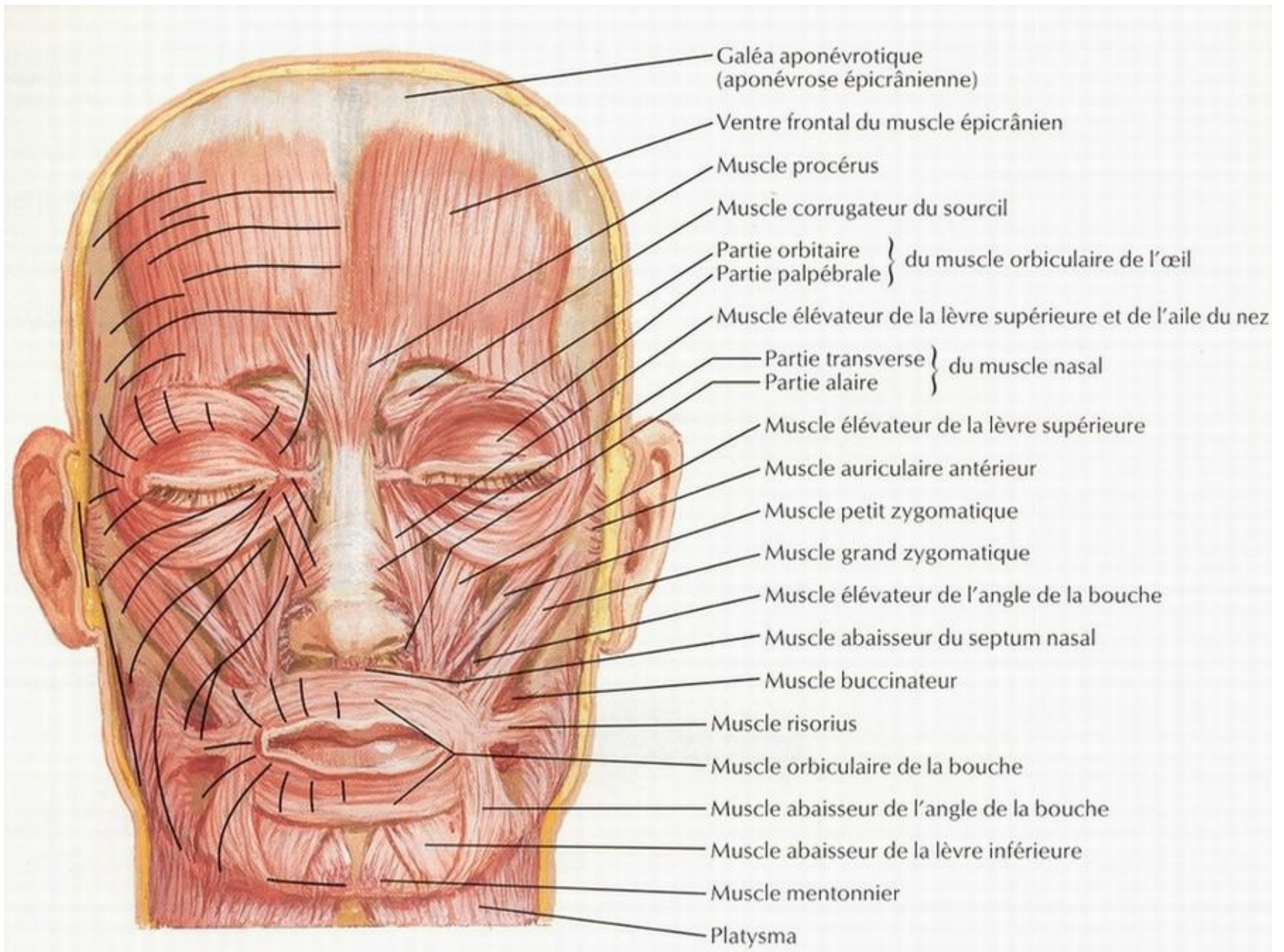
Situation

- } 2 groupes musculaires :
 - } **Muscles superficiels** (peauciers).
 - } **Muscles profonds** (sous-aponévrotiques).

Muscles superficiels

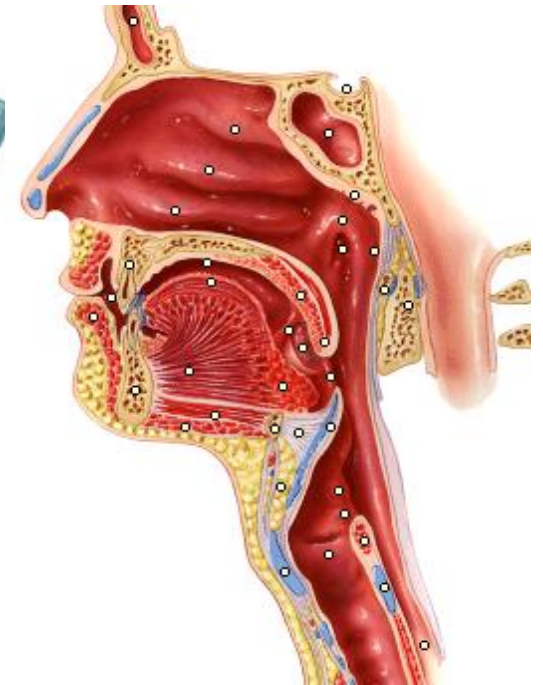
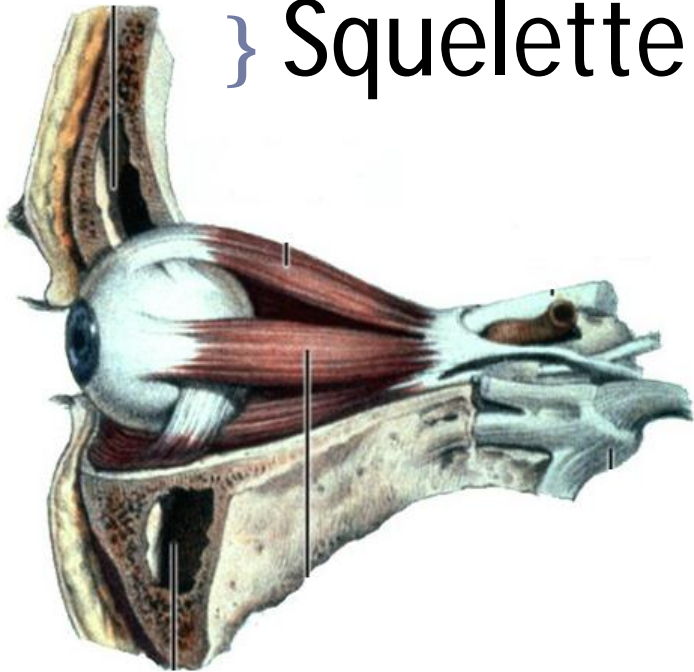
} Sous-cutanés.

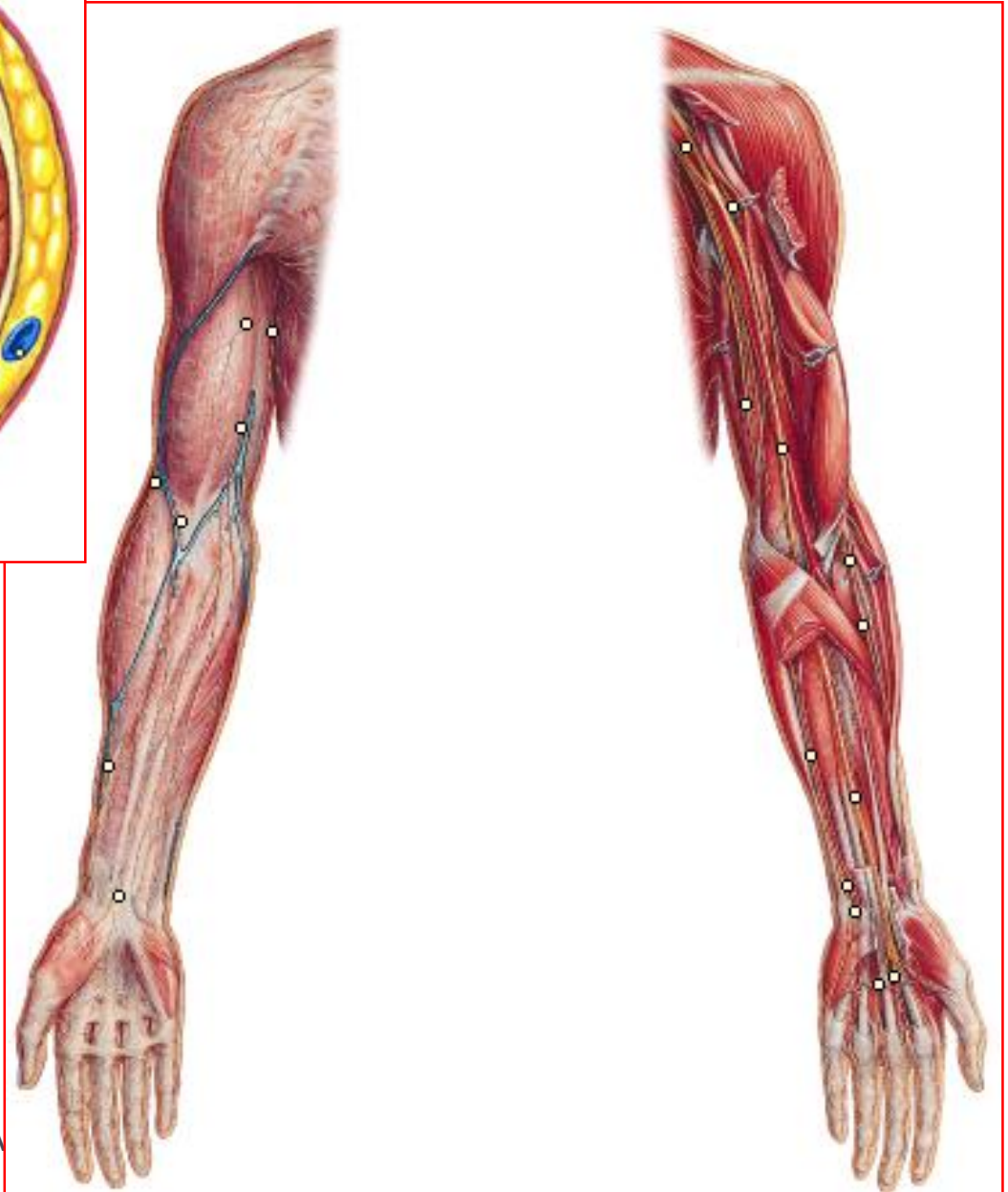
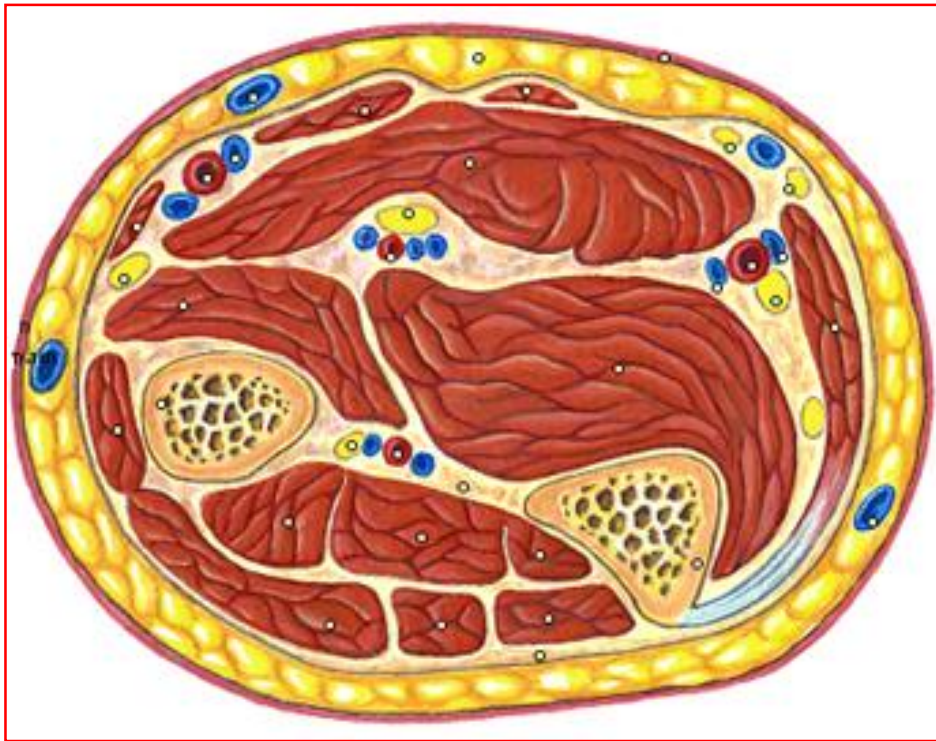




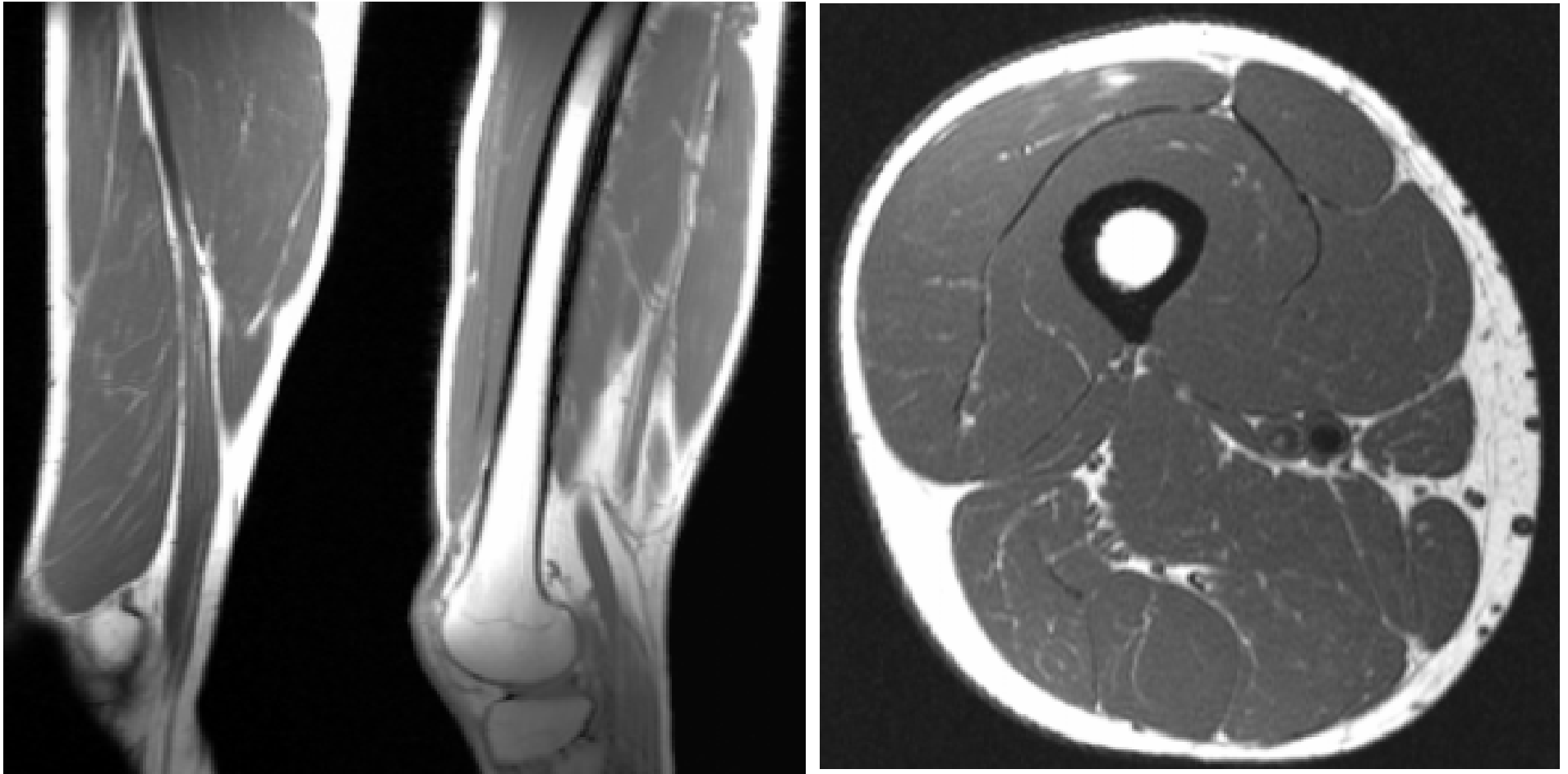
Muscles profonds

- } Appareil respiratoire.
- } Appareil digestif.
- } Organes de sens.
- } Squelette.





IRM: muscles de la cuisse

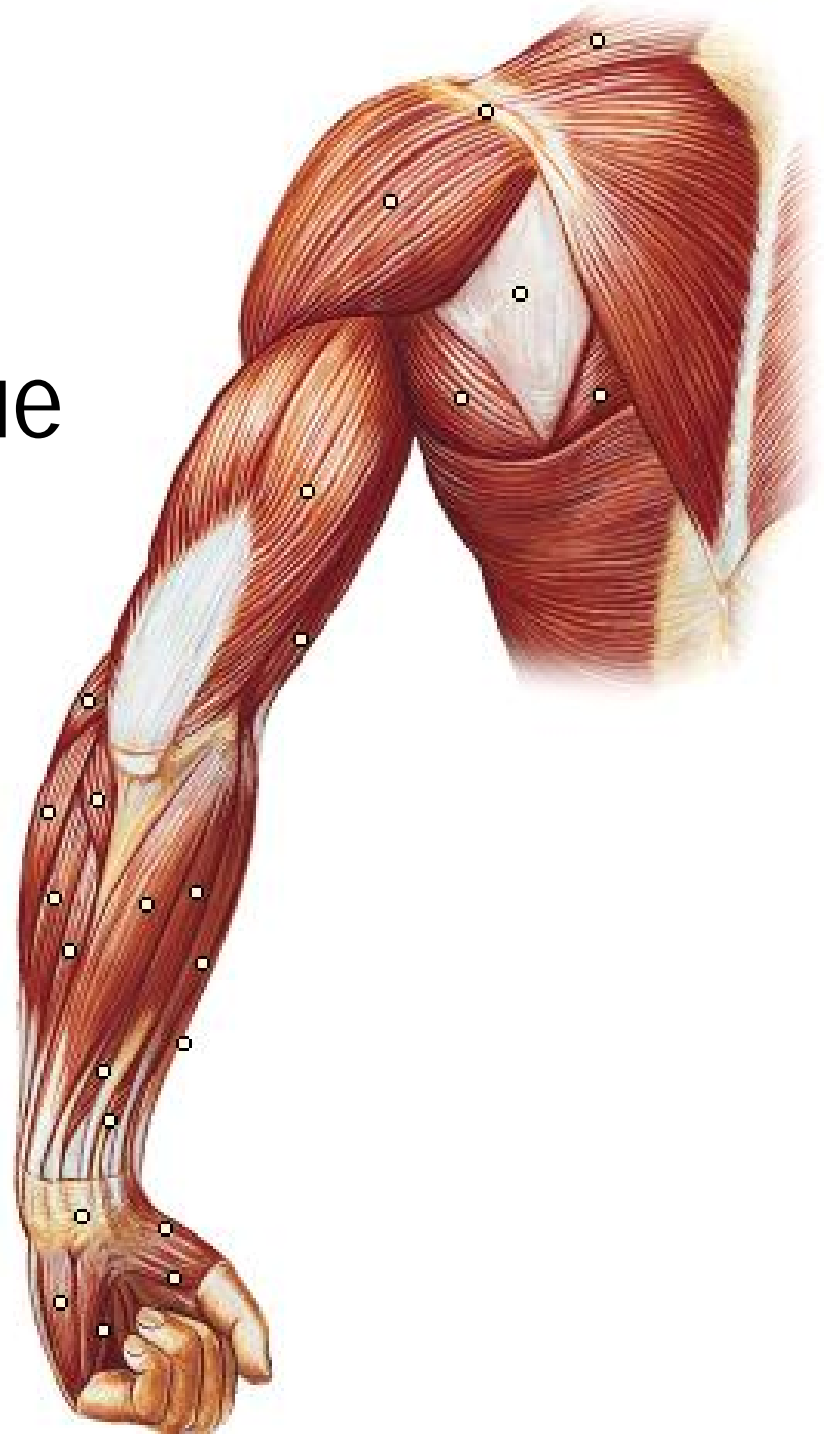


DESCRIPTION



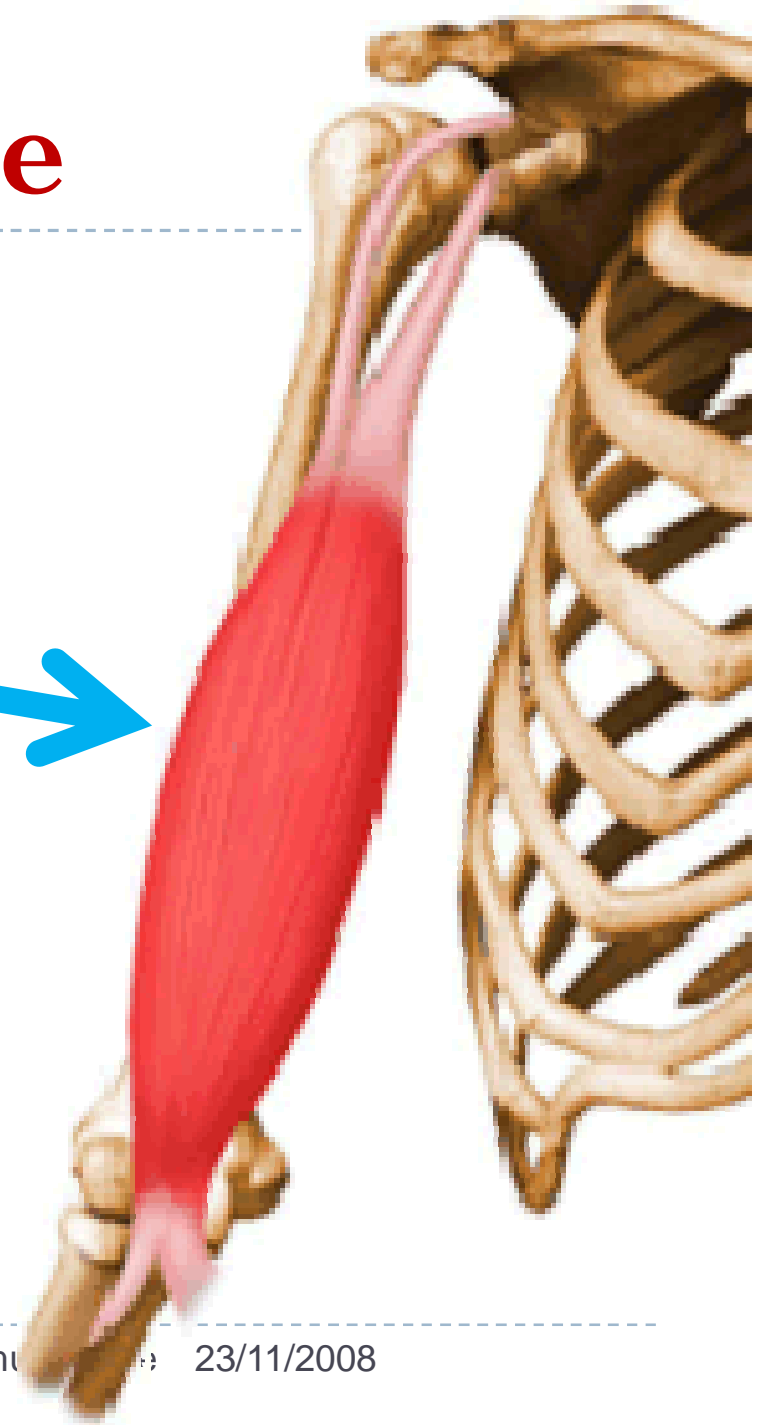
Description

- } Le muscle squelettique présente 2 parties:
 - } **Ventre (corps) musculaire.**
 - } **Tendon musculaire.**



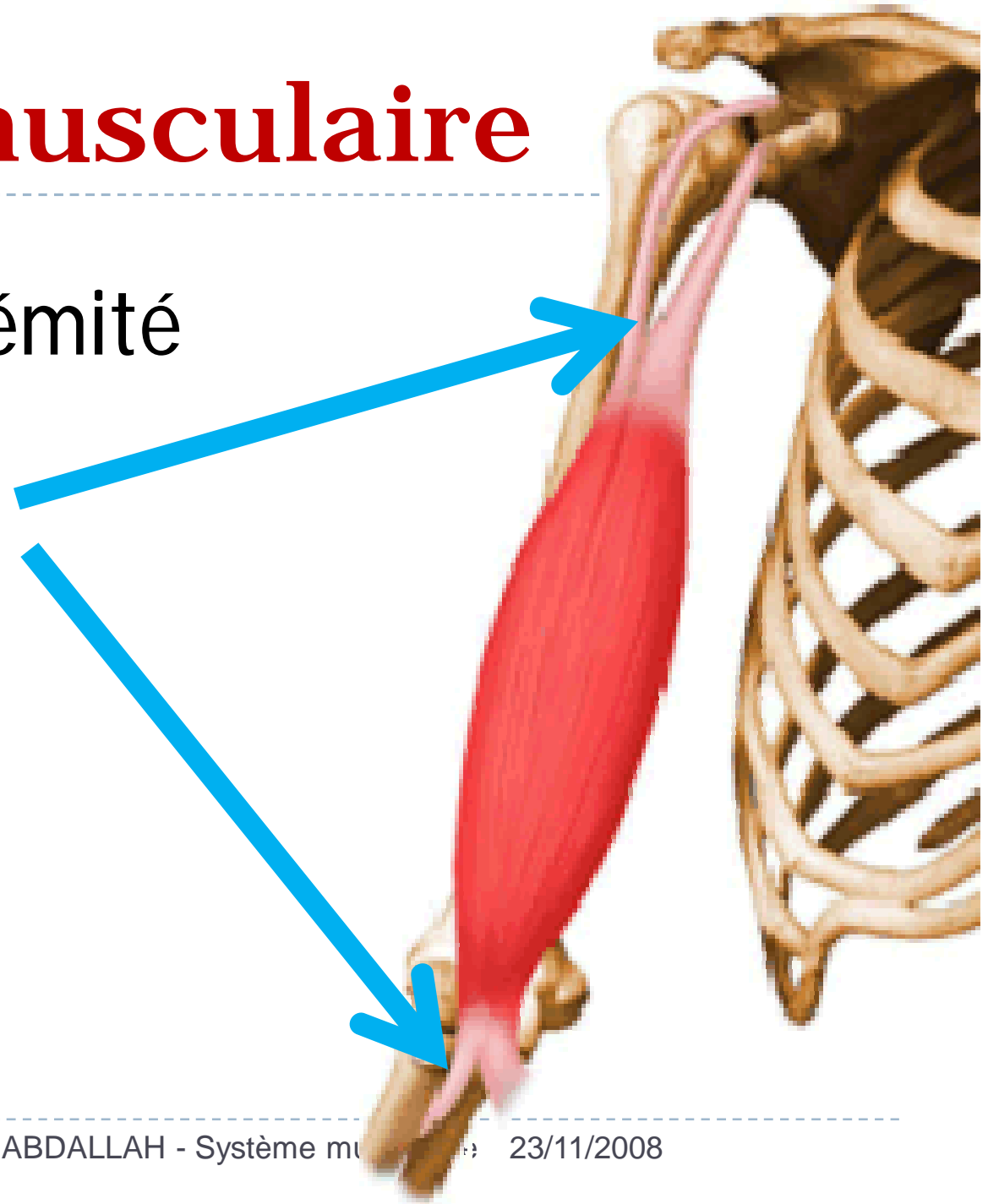
Ventre musculaire

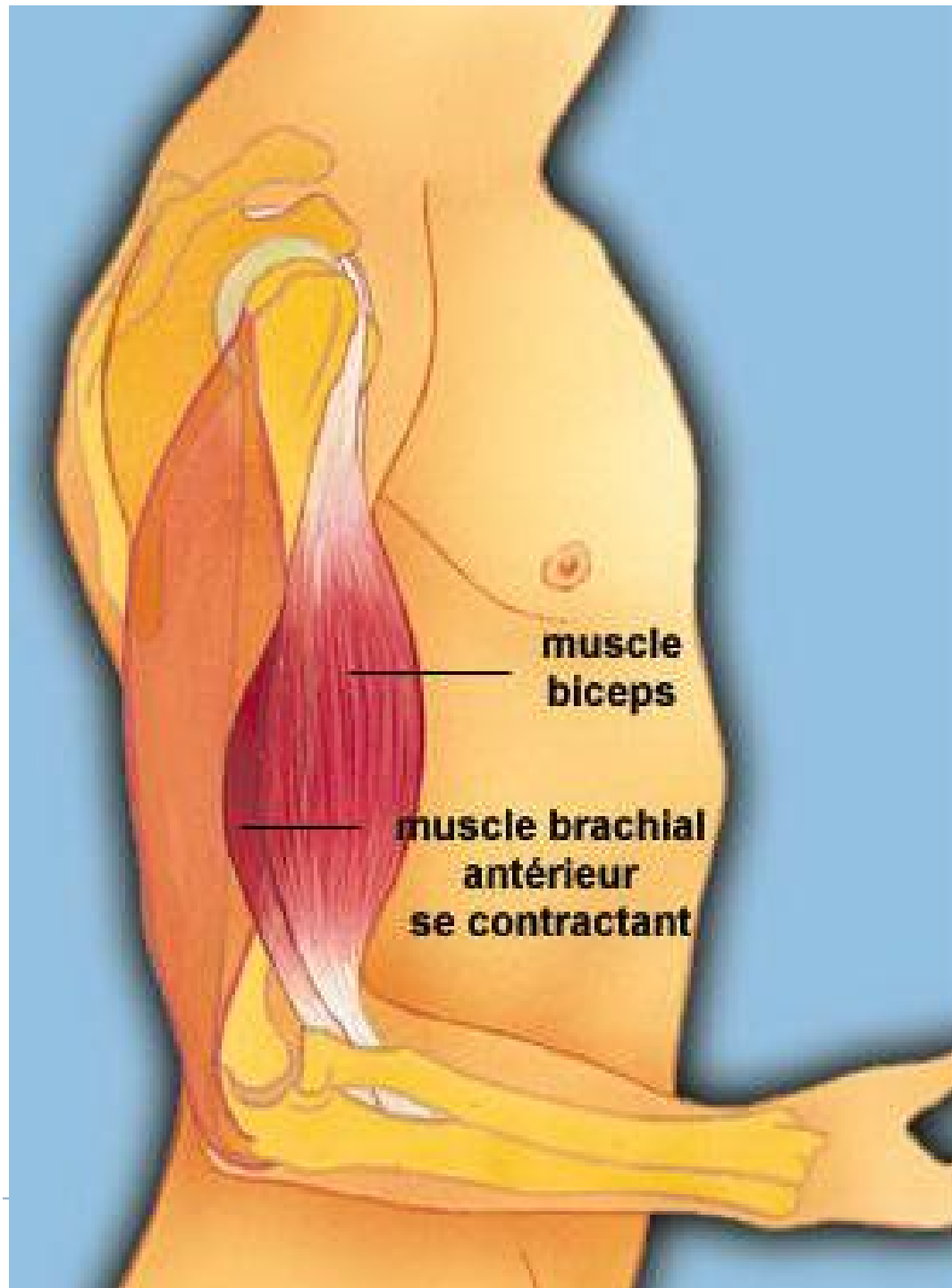
- } Médian.
- } Charnu.
- } Volumineux.
- } Contractile.
- } Rouge.



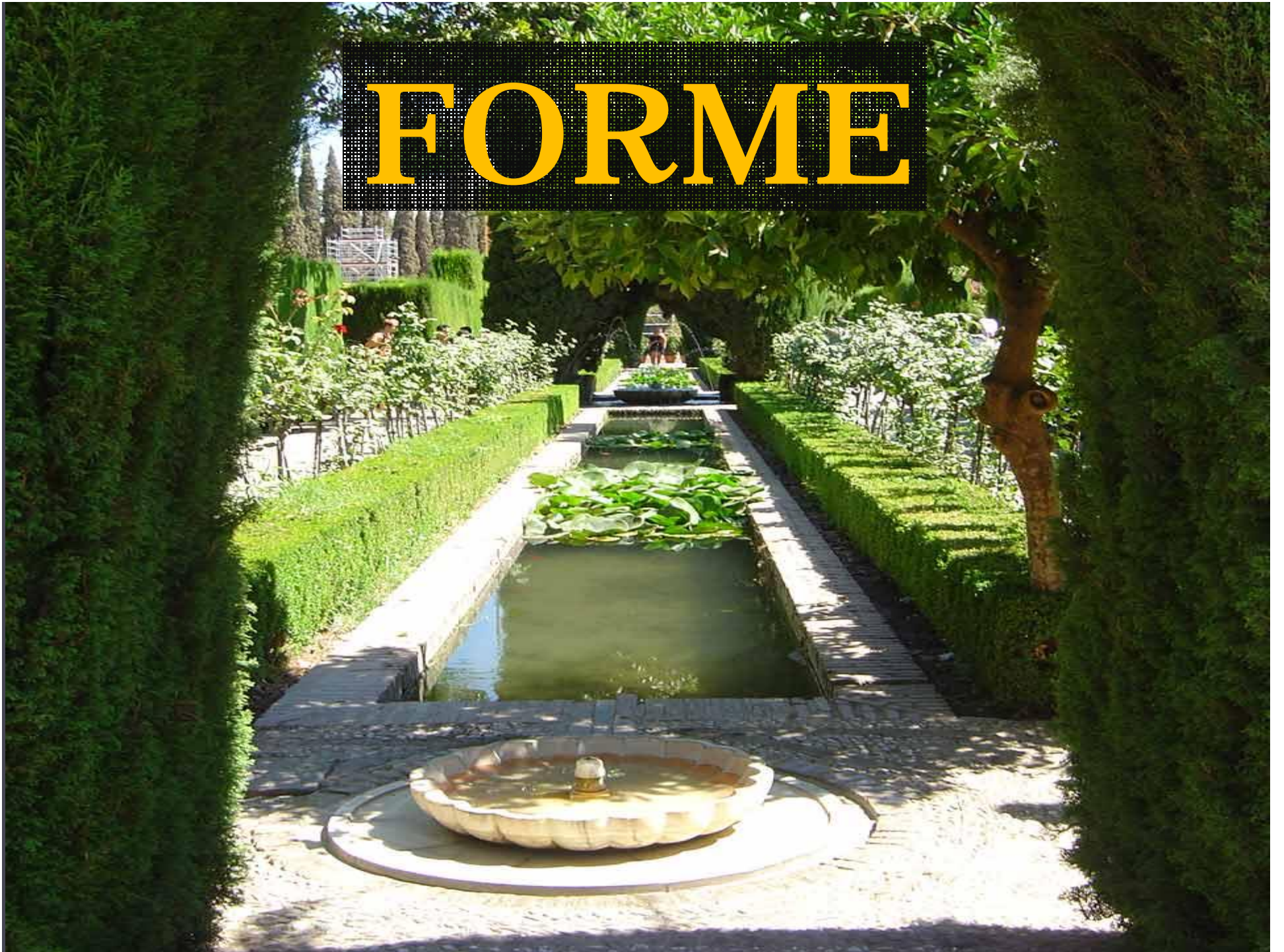
Tendon musculaire

- } Forme l'extrémité du muscle.
- } Étroit.
- } Résistant.
- } Blanchâtre.



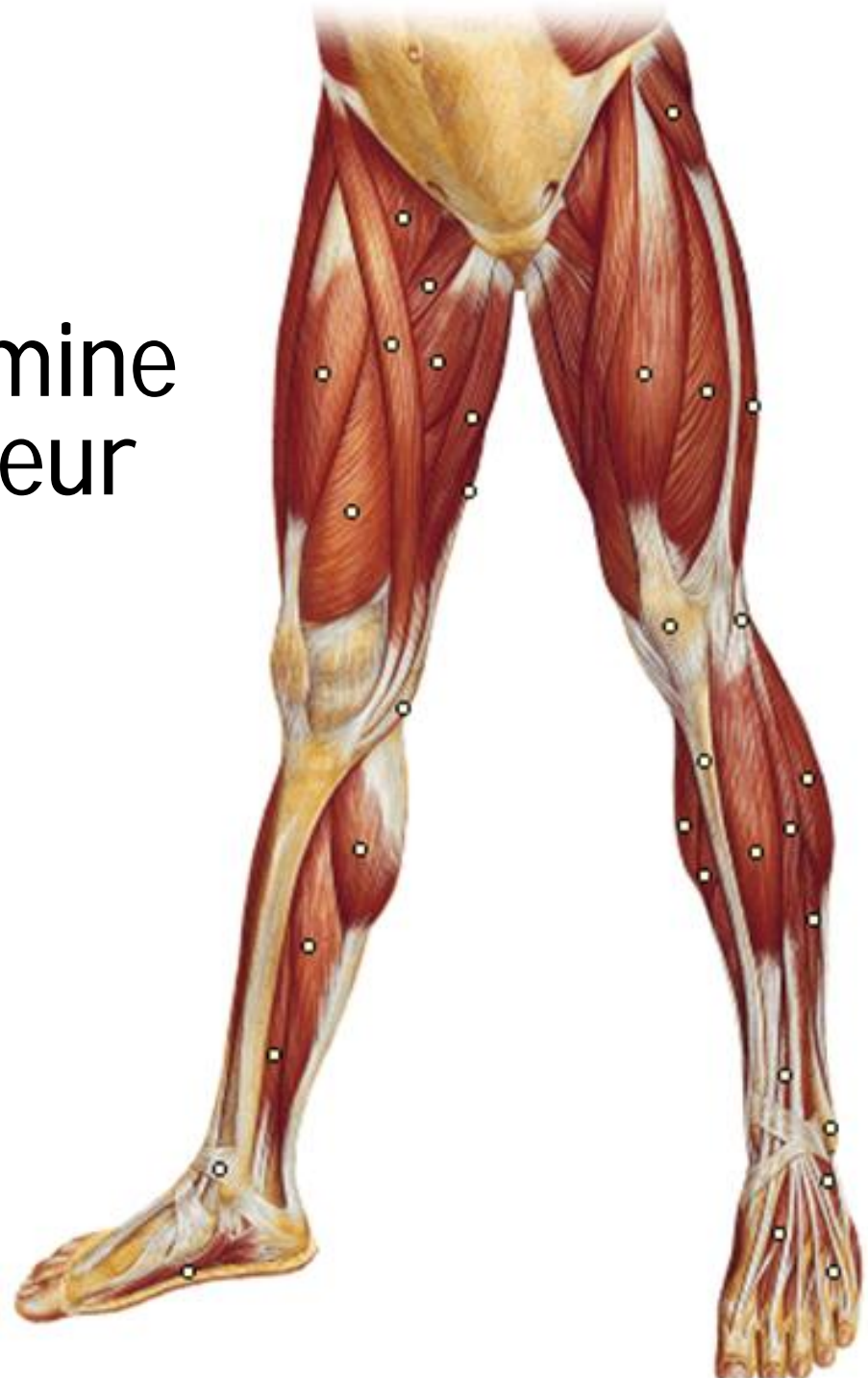


FORME



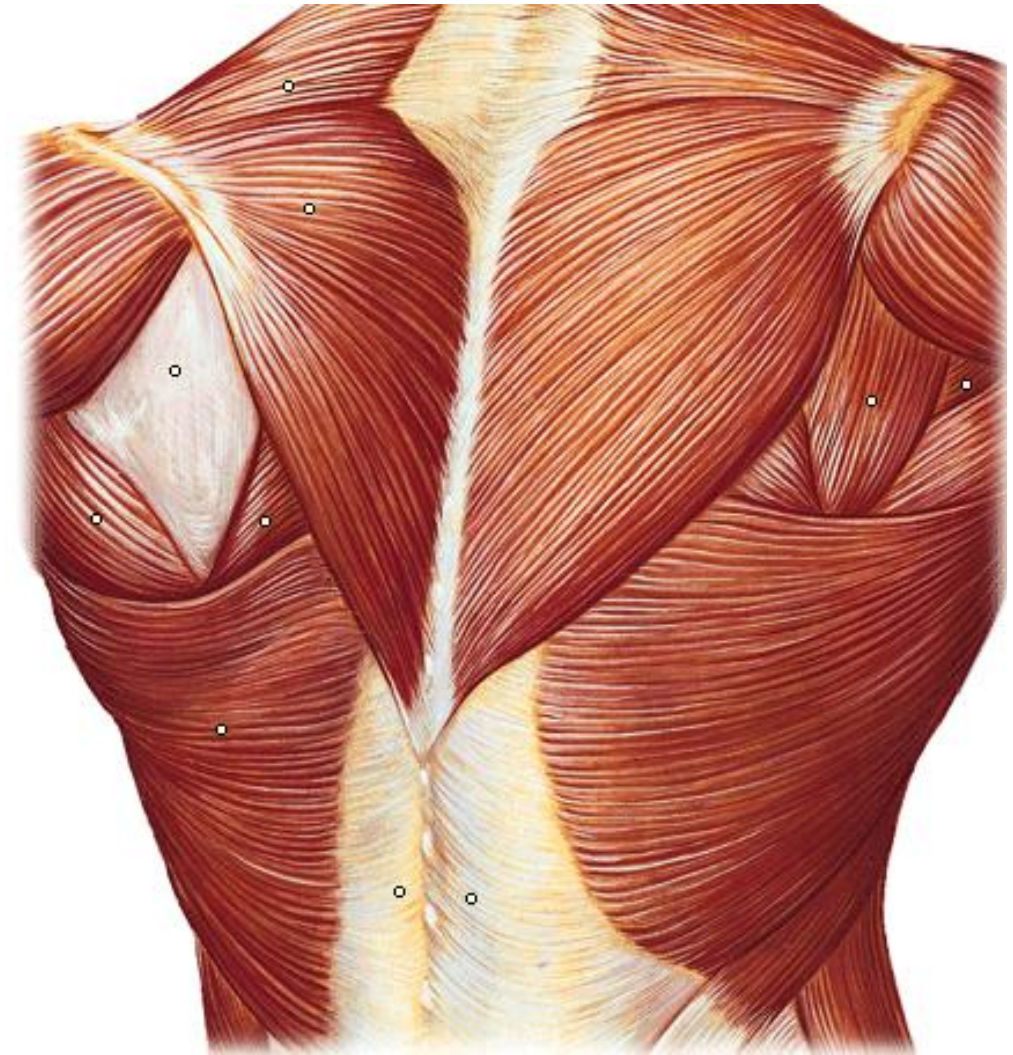
Muscle long

} La longueur prédomine par rapport à la largeur et l'épaisseur.



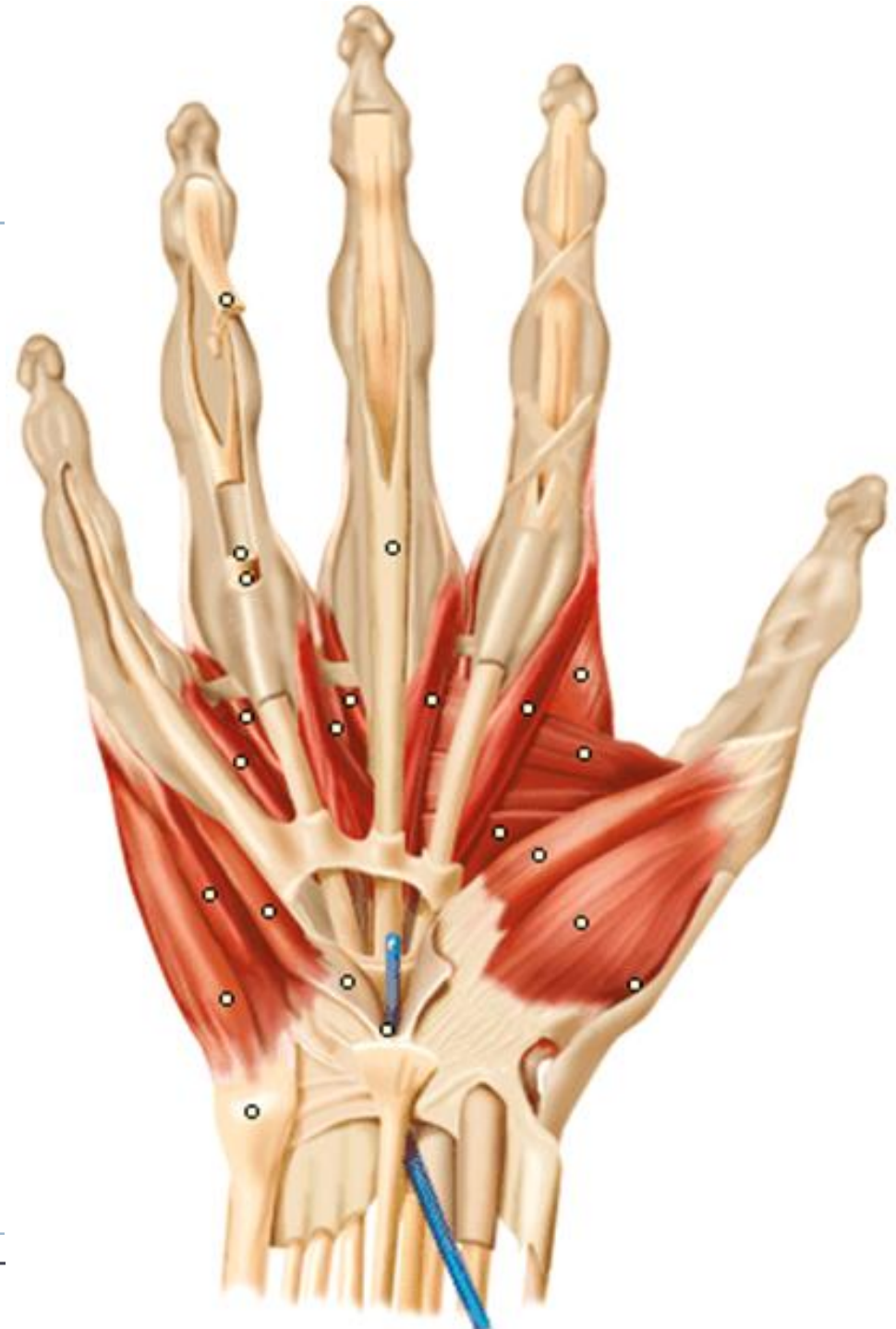
Muscle plat

} Longueur et largeur prédominant par rapport à l'épaisseur.



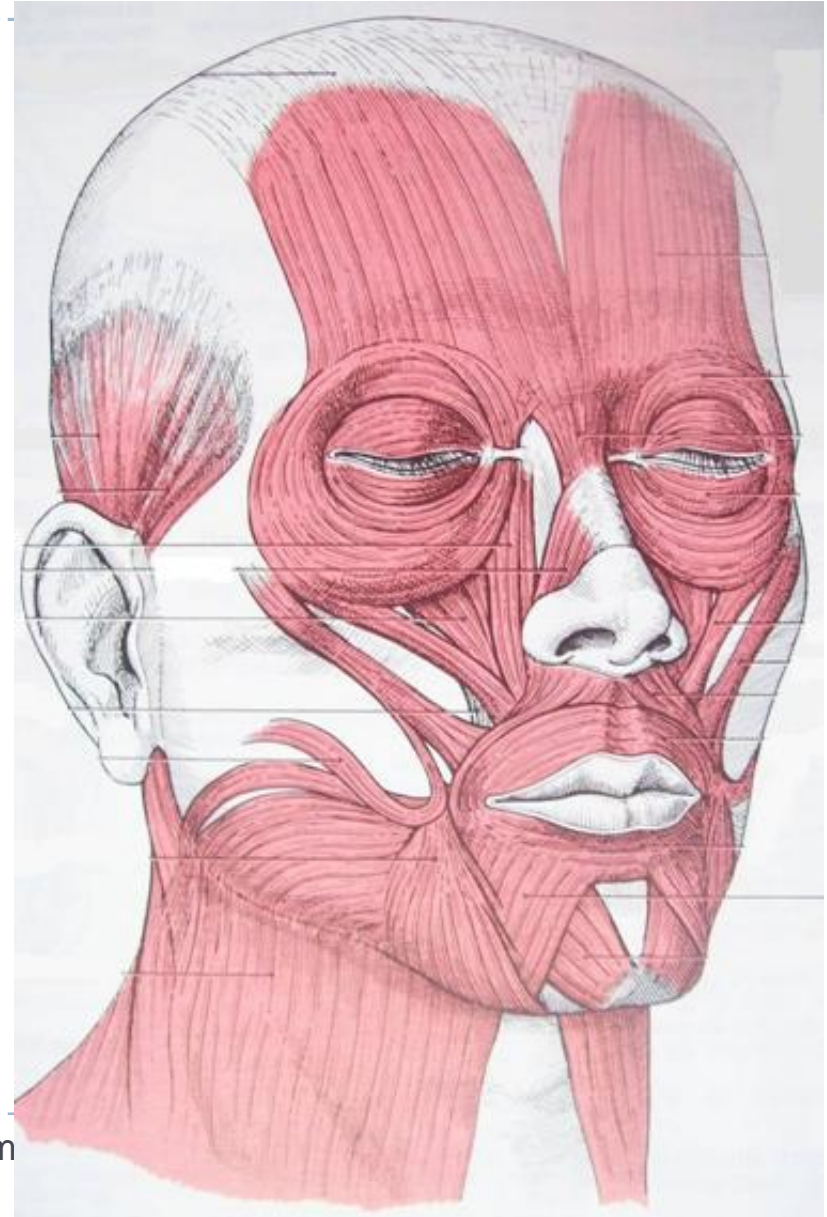
Muscle court

} Les 3 dimensions sont réduites.



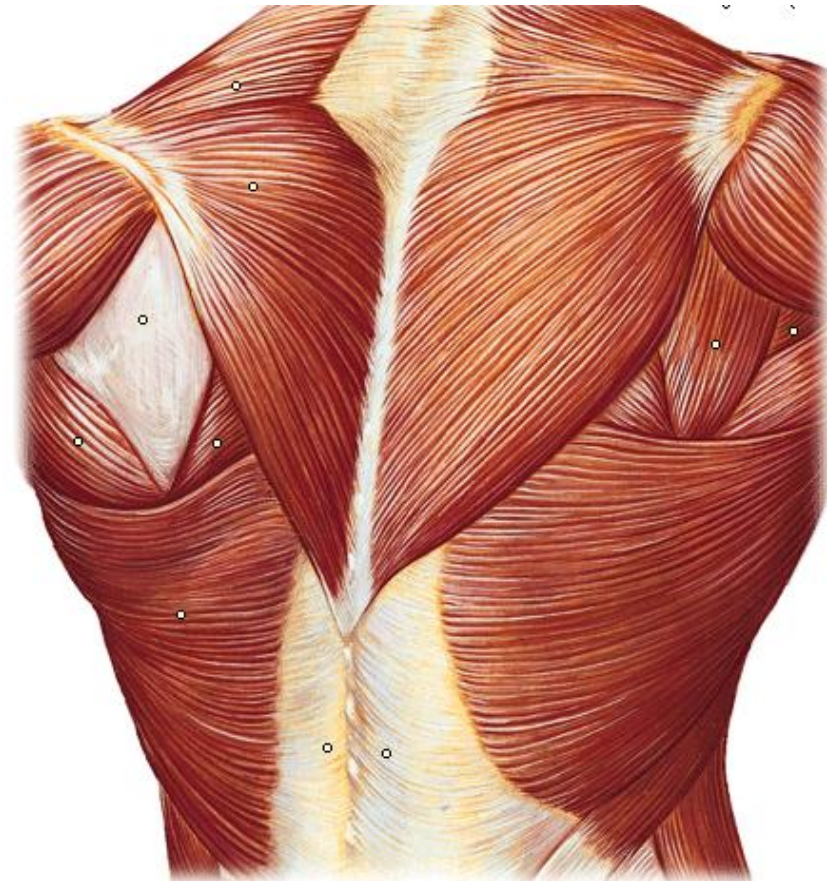
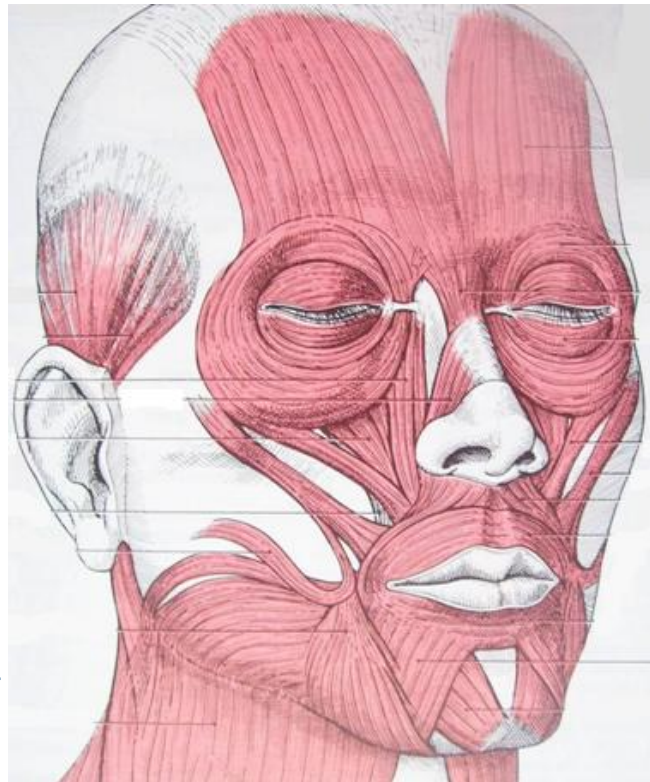
Muscle annulaire

} Situé autour des orifices.



Muscle géométrique

- } Trapèze.
- } Carré.
- } Triangulaire...



A photograph of a traditional Islamic courtyard. In the center, a long, narrow fountain with multiple tiers and several jets of water flows down a central channel. The courtyard is paved with light-colored tiles, and there are large, rounded pots containing green plants on either side of the fountain. In the background, a building with arched windows and a tiled roof is visible. The word "TEXTURE" is overlaid in large, bold, yellow letters on a black, dotted background across the middle of the image.

TEXTURE

Texture

- } C'est l'organisation des faisceaux musculaires et les rapports affectés avec les tendons:
 - } **Muscle plat.**
 - } **Muscle fusiforme.**
 - } **Muscle unipenné.**
 - } **Muscle bipenné.**
 - } **Muscle multipenné.**
 - } **Muscle simple (monogastrique).**
 - } **Muscle composé (polygastrique).**

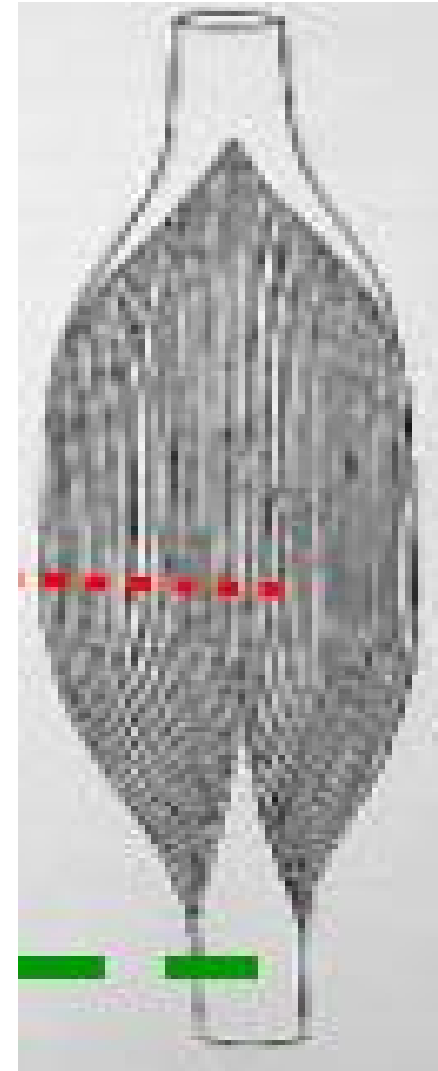
Muscle plat

} Faisceaux musculaires parallèles et prolongent les faisceaux tendineux.



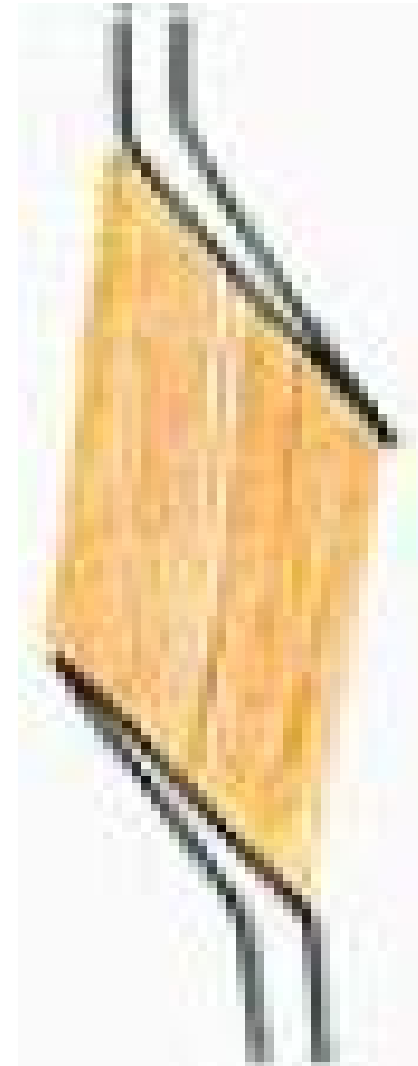
Muscle fusiforme

} Faisceaux convergent vers l'extrémité des tendons.



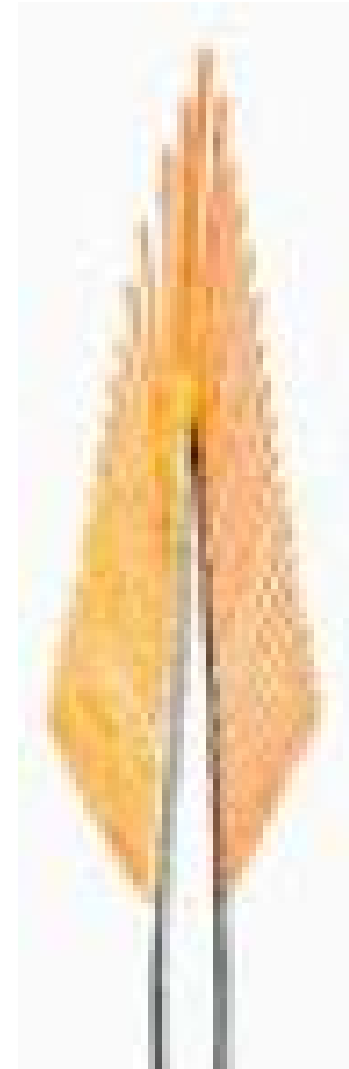
Muscle unipenné

} Faisceaux se fixent sur un bord du tendon, inclinés et oblique par rapport à la direction du corps du muscle.



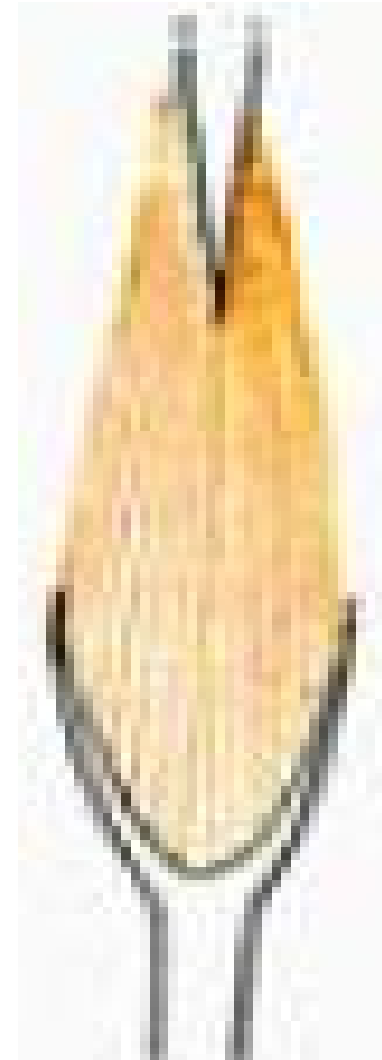
Muscle bipenné

} Faisceaux se fixent sur les 2 bords du tendon.



Muscle multipenné

} Faisceaux se fixent sur les subdivisions d'un tendon.



Muscle simple

} Avec un seul ventre.



Muscle composé

} Avec 2 ventres ou plus:

} Soit les ventres **se succèdent**.

} Soit les ventres se disposent **en parallèle ou juxtaposés**.

